



## Quality audits on environment and energy - Relevant information

Sl. No	Particulars
1	Green policy
2	Environment Audit- Carbon Study Report
3	Environment Audit- Soil Carbon Report- KFRI
4	Smart Campus Award- Application- Final Report
5	Beyond the Campus Environment promotion Activities - CWRE- water Consultancy(Concessional Rates and on the Spot Inspection) - Relevant pages



# Jyothi Engineering College

SAAC Accredited College with 100% Accredited Programmes

Approved by AICTE & affiliated to APJ Abdul Kalam Technological University

INSTITUTION OF EXCELLENCE IN SCIENCE & TECHNOLOGY BY THE CATALYTIC AND INNOVATIVE THINKING FOR

JYOTHI ENGINEERING COLLEGE, CHORUTHURUTHY, THESSUR, PIN-679531. PH: 4884 12933, 274423 FAX: 24884 214777



NBA is accredited 8 to 10 programs in Mechanical Engineering, Electrical & Electronics Engineering, Computer Science & Engineering, Information Technology, and Management Studies. NBA is accredited 8 to 10 programs in Chemical Engineering, Civil Engineering, and Environmental Engineering. NBA is accredited 8 to 10 programs in Mechanical Engineering, Electrical & Electronics Engineering, Computer Science & Engineering, Information Technology, and Management Studies. NBA is accredited 8 to 10 programs in Chemical Engineering, Civil Engineering, and Environmental Engineering. NBA is accredited 8 to 10 programs in Mechanical Engineering, Electrical & Electronics Engineering, Computer Science & Engineering, Information Technology, and Management Studies.

## GREEN POLICY

The Institution strives to be a leader in incorporating Green initiatives in the best interest of the Environment. This policy applies to all the Stakeholders of the Institution, including students, faculty & Staff.

This policy will play an integral role as the Institution continues to develop an environmentally sustainable and economically viable campus that reflects the Institutional core values of engagement and accountability. This statement represents a commitment by the JEC to meet the needs of students, faculty and staff while preserving the environment for future generations.

The Institution is committed to preparing its students to become engaged environmental citizens on campus, in their own communities and throughout their lives. The Institution will educate the community and implement the best practices to improve the environmental footprint of the campus and its operations. Natura, the Environmental forum of Jyothi Engineering College aims at attaining a clean and healthy environment today, tomorrow and forever.

- The Institution will consider the environmental impact of its development, communications, procurement, curriculum, research and campus activities.
- The Institution will strive to practice ecological responsibility focused on the preservation of its natural woodlands and gardens with Trees and Plants and also take efforts to lead the campus to a biodiversity campus with ecologically varied species like bamboo and other relevant trees and medicinal plants.
- The Institution will effectively manage the waste with proper waste segregation and disposal.
- The institution fosters a culture of conserving water by installing rainwater harvesting unit

Dr. SUNNY JOSEPH KALAYATHANKAL  
M.Sc., M.Phil., B.Ed.  
Ph.D. (Computer Science), Ph.D. (Maths)  
PRINCIPAL

Jyothi Engineering College  
Choruthuruthy P.O. - 679 531

*Amund*





# Jyothi Engineering College

NBA A1 Accredited College with 100% Accredited Programmes

Approved by AICTE R, affiliated to APJ Abdul Kalam Technological University



- The Institution will strive to augment Renewable Energy such as Solar for its energy requirement and Solar water heating system
- The Institution will carry out energy auditing to assess the usage of electricity by different electrical installations
- The Institution will effectively segregate the electronic waste and dispose the same to proper Government approved agencies
- The Institution will purchase ENERGY STAR rated appliances and computers, paper products from responsible vendors
- The institution will implement and install sensors at strategic locations
- The Institution will emphasize on complete ban and usage of Plastic
- The Institution will build Pedestrian Friendly Pathways for the safe and easy movement of Staff & students in the campus

*amr*

Executive Manager

Dr. SUNNY JOSEPH KALAYATHANKAL  
M.Tech, MCA, M.Sc, M.Phil, B.Ed  
Ph.D (Computer Science), Ph.D (Maths)  
PRINCIPAL  
Jyothi Engineering College  
Cheruthuruthy P.O.- 679 531

## Website Screen Shot of Green Policy

The screenshot displays the Jyothi Engineering College website. The browser's address bar shows the URL [www.jyothi.ac.in](http://www.jyothi.ac.in). The page has a dark blue header with the college's name and logo. Below the header, there is a navigation menu with links to various sections. The main content area is divided into three columns, each featuring a group photo and a caption. The first column shows a group of students and faculty, captioned "18TH INDUCTION CEREMONY". The second column shows a group of students, captioned "2017-2019 BATCH M. TECH GROUP PHOTOS". The third column shows a group of students, captioned "2015-2019 BATCH B. TECH GROUP PHOTOS". To the right of the photos, there is a sidebar with a list of links. The links are organized into two columns. The first column includes links to "Mandatory Disclosure", "HR Manual", "Tuition Fee Waiver Granted 2016 | 2017 | 2018 | 2019", "College Hand Book 2019-20", "Login", "Campusbook | Website Login", "ARIA 2021 Report", and "Green Policy". The second column includes links to "NIRF Report Engineering", "Anti Ragging Cell", "Grievances Redressal System", "AICTE Feedback", "RTI ACT 2005", "AICTE Approval 2021-22 | 2020-21 | 2019-20 | 2018-19 | 2017-18 | Previous", "NBA Accreditation NBA Certificate(2019-22) | NBA Certificate(2016-19)", "NAAC Accreditation NAAC Certificate | NAAC SSR", "KTU Affiliation Order 2021-22 | 2020-21 | 2019-20 | 2018-19 | 2017-18 | 2016-17", and "IQAC".

**18TH INDUCTION CEREMONY**

**2017-2019 BATCH M. TECH GROUP PHOTOS**

**2015-2019 BATCH B. TECH GROUP PHOTOS**

**Navigation Menu:**

- Mandatory Disclosure
- HR Manual
- Tuition Fee Waiver Granted 2016 | 2017 | 2018 | 2019
- College Hand Book 2019-20
- Login
- Campusbook | Website Login
- ARIA 2021 Report
- Green Policy
- NIRF Report Engineering
- Anti Ragging Cell
- Grievances Redressal System
- AICTE Feedback
- RTI ACT 2005
- AICTE Approval 2021-22 | 2020-21 | 2019-20 | 2018-19 | 2017-18 | Previous
- NBA Accreditation NBA Certificate(2019-22) | NBA Certificate(2016-19)
- NAAC Accreditation NAAC Certificate | NAAC SSR
- KTU Affiliation Order 2021-22 | 2020-21 | 2019-20 | 2018-19 | 2017-18 | 2016-17
- IQAC

**Principal's Name and Signature:**

Dr. SUNNY JOSEPH KALAYATH/ANKA-  
M.Tech, MCA, M.Sc, M.Phil, B.Ed  
Ph.D (Computer Science), Ph.D (V. J. 2015)  
PRINCIPAL  
Jyothi Engineering College  
Cheruthuruthy P.O.-675 311





# Jyothi Engineering College

NAAC Accredited College with NBA Accredited Programmes\*

Approved by AICTE & affiliated to APJ Abdul Kalam Technological University

A CENTRE OF EXCELLENCE IN SCIENCE & TECHNOLOGY BY THE CATHOLIC ARCHDIOCESE OF TRICHUR

JYOTHI HILLS, VETIKATTIRI P.O., CHERUTHURUTHY, THRISSUR, PIN-679531 PH: +91-4884-259000, 274423 FAX: 04884-274777

NBA accredited B.Tech Programmes in Computer Science & Engineering, Electronics & Communication Engineering, Electrical & Electronics Engineering, and Mechanical Engineering valid for the academic years 2016-2022. NBA accredited B.Tech Programme in Civil Engineering valid for the academic years 2019-2022.



## REPORT

ON

## CARBON STUDY

FOR

**JYOTHY ENGINEERING COLLEGE, THRISSUR**

### 1. Introduction

This carbon footprint report has been prepared in full accordance with the Greenhouse Gas Protocol (GHG), the most widely used international carbon calculation methodology, compatible with other GHG standards such as the ISO 14064, which also allows for direct integration with national and international greenhouse gas (GHG) registries.

The carbon footprint gives a general overview of the possible greenhouse gas emissions from the institution, converted into CO<sub>2</sub> -equivalents and it is based on reported data from internal and external systems. The purposes of the carbon indicators are to measure the carbon intensity per unit of product, in addition to showing environmental transparency towards external stakeholders.

### 2. Methodology

The carbon footprint reporting approach undertaken in this study follows the guidelines and principles set out in the "Greenhouse Gas Protocol Corporate Accounting and Reporting Standard" (hereafter referred to as the GHG Protocol) developed by the Greenhouse Gas Protocol Initiative and international standard for the quantification and reporting of greenhouse gas emissions -ISO 14064. This is the most widely used and accepted methodology for conducting corporate carbon footprints.

This involves accounting for, and reporting on, the GHG emissions from all those activities for which the institution is directly responsible. The items quantified in this study are as classified under the ISO 14064 standards: This includes electricity, LPG consumption as well as emission associated with diesel consumption in the institute vehicle. Emissions from business activities are generally classified as scope 1, 2 or 3 areas classified under the ISO 14064 standards.

#### Scope 1: Direct emissions (mandatory reporting)

This level concerns all emissions from sources owned or controlled by the JEC. Scope 1 includes All direct emissions from the institution owned or controlled sources, such as institute vehicles, and heat generation (LPG). The study has made all efforts possible to use the best available emissions factors available at the time and has cited the source of all emission factors used.

There are three Tiers presented in the 2006 IPCC Guidelines for estimating emissions from fossil fuel combustion. The study has considered Tier 1 method. The Tier 1 method is fuel-based since emissions from all sources of combustion can be estimated on the basis of the quantities of fuel combusted (usually from national energy statistics) and average emission factors.

True Copy Attested

Dr. SUNNY JOSEPH KALAYATHANKAL  
M.Tech, MCA, M.Sc, M.Phil, B.Ed  
Ph.D (Computer Science), Ph.D (Maths)  
PRINCIPAL  
Jyothi Engineering College





# Jyothi Engineering College

NAAC Accredited College with NBA Accredited Programmes\*

Approved by AICTE & affiliated to APJ Abdul Kalam Technological University

A CENTRE OF EXCELLENCE IN SCIENCE & TECHNOLOGY BY THE CATHOLIC ARCHDIOCESE OF TRICHUR

JYOTHI HILLS, VETIKATTIRI P.O, CHERUTHURUTHY, THRISSUR, PIN-679531 PH: +91- 4884-259000, 274423 FAX: 04884-274777

NBA accredited B.Tech Programmes in Computer Science & Engineering, Electronics & Communication Engineering, Electrical & Electronics Engineering and Mechanical Engineering valid for the academic years 2016-2022. NBA accredited B.Tech Programme in Civil Engineering valid for the academic years 2019-2022.

The quality of these emission factors differs between gases. For CO<sub>2</sub>, emission factors mainly depend upon the carbon content of the fuel. Combustion conditions are relatively unimportant. Therefore, CO<sub>2</sub> emissions can be estimated fairly accurately based on the total amount of fuels combusted and the averaged carbon content of the fuels. Hence, for CO<sub>2</sub> in general, a Tier 1 method based on fuel carbon and fuel amount used will often suffice and the same approach is used in the report for calculating the GHG emissions from the combustion of fuels.

The activity data for calculating the GHG emissions is the amount of fuel combusted. The direct measurement has been used as the preferred method for the data collection of fuel combusted to calculate the emissions so as to reasonably minimize the uncertainty. When there is no accessibility to the direct measurement, emissions have been calculated through the application of documented models or facility specific correlation or through the mass balance approach.

## Scope 2: Indirect emissions (mandatory reporting)

This level concerns all emissions from purchased energy. This means the purchase of electricity from the KSEB (Kerala State Electricity Board) which is connected to the Indian Grid. The electricity CO<sub>2</sub> emission factor is calculated from the India electricity production mix, which is the suitable emission factor used for the Indian Grid.

## Scope 3: Other Indirect Emissions

All other indirect emissions as a consequence of the activities of the institute that occur from sources neither owned nor controlled by the institution (e.g. outsourced distribution). Emissions covered under Scopes 1 and 2 are mandatory for reporting, while Scope 3 emissions can be reported on a voluntary basis.

Apart from the emissions from the institution, the possibilities of carbon sequestration by the vast area of college campus by soil and rich vegetation, is also explored in this carbon study.

## 3. Data Requirements and Emission Factors

The various data required and respective emission factors used in this study are shown in Table 1.

Table 1 Data Requirements and Emission Factors

Sl. No.	DATA		EMISSION FACTORS	
	Item	Unit of Data	Carbon equivalent	Unit
	<i>Scope 1: Direct Emissions</i>			
1	Diesel Usage in Labs	litres of diesel/year	2.79	kg per litre
2	LPG (Hostels+ Canteen+Labs)	litre or kg of LPG / year	1.5	kg per litre
3	Incinerator	kg per year	1	kg per kg

True Copy Attested

Dr. SUNNY JOSEPH KALAYATHANKAL  
M.Tech, MCA, M.Sc, M.Phil, B.Ed  
Ph.D (Computer Science), Ph.D (Maths)  
PRINCIPAL  
Jyothi Engineering College





# Jyothi Engineering College

NAAC Accredited College with NBA Accredited Programmes\*

Approved by AICTE & affiliated to APJ Abdul Kalam Technological University

A CENTRE OF EXCELLENCE IN SCIENCE & TECHNOLOGY BY THE CATHOLIC ARCHDIOCESE OF TRICHUR

JYOTHI HILLS, VETTIKATTIRI P.O., CHERUTHURUTHY, THRISSUR, PIN-679531 PH : +91- 4884-259000, 274423 FAX : 04884-274777



NBA accredited B.Tech Programmes in Computer Science & Engineering, Electronics & Communication Engineering, Electrical & Electronics Engineering and Mechanical Engineering valid for the academic years 2016-2022. NBA accredited B.Tech Programme in Civil Engineering valid for the academic years 2019-2022.

4	Transport			
	College Bus	disel fuel consumed / year	2.79	kg per kg
	HOD Van	Dist. travelled/ year	0.209	kg per km
	Other Adminstrative cars	Dist. travelled/ year	0.117	kgco2 per km
	Other Adminstrative bikes	Dist. travelled/ year	0.0542	kgco2 per km
	<i>Scope 2: InDirect Emissions</i>			
1	Grid Electricity	kW/year		
2	Solar Power	kW/year		
		Net	0.81	kg per kWH
3	Annual Consumption			
	Paper	kg per year	0.876	kg per kg
	Hostel Provisions for Food	No.of students plus other inmates	2.42	kg percapit per day
	<i>Scope 3: Other Indirect Emissions</i>			
1	Annual waste			
	Agricultural/garden	kg per year		
	Paper	kg of paper/year	0.21	kg per kg
2	Annual Purchases			
	Computer Accessories			D
	1. Computers	Number	660	kg per number
	2. Laptop	Number	260	kg per number
	Chemicals	kg per year	2	kg per kg
	Electronics and Electrical (Copper)	kg per year	2	kg per kg
	Engineering Workshops (Metal)	kg per year	2	kg per kg
3	Transport Other than College buses			
	Bike passes	Dist. travelled/ year	0.0542	kgco2 per km
	Car passes	Dist. travelled/ year	0.117	kgco2 per km
	Utility vehicles(Tempo, truck)	Dist. travelled/ year	0.5928	kgco2 per km
	Local Buses	pax. Dist. travelled/ year	0.015161	kgco2 per pax km

True Copy Attested

Dr. SUNNY JOSEPH KALAYATHANKAL  
M.Tech, MCA, M.Sc, M.Phil, B.Ed  
Ph.D (Computer Science), Ph.D (Maths)  
PRINCIPAL  
Jyothi Engineering College  
Cheruthuruthy P.O. 679 531



# Jyothi Engineering College

NAAC Accredited College with NBA Accredited Programmes\*

Approved by AICTE & affiliated to APJ Abdul Kalam Technological University

A CENTRE OF EXCELLENCE IN SCIENCE & TECHNOLOGY BY THE CATHOLIC ARCHDIOCESE OF TRICHUR

JYOTHI HILLS, VETIKATTIRI P.O., CHERUTHURUTHY, THRISSUR, PIN-679531 PH : +91- 4884-259000, 274423 FAX : 04884-274777



NBA accredited B.Tech Programmes in Computer Science & Engineering, Electronics & Communication Engineering, Electrical & Electronics Engineering and Mechanical Engineering valid for the academic years 2016-2022. NBA accredited B.Tech Programme in Civil Engineering valid for the academic years 2019-2022.


The emission factors are deduced from the various secondary sources, reports and research papers. The institution has a solar power plant of 63 KW, which augments the energy needs in a sustainable way. The energy savings in this regard is assessed from an Energy audit conducted by an audited agency.

#### 4. Conclusion

The total carbon emissions in Scope 1, Scope 2 and Scope 3 are estimated to be 329327 kg CO<sub>2</sub>, 431353 kg CO<sub>2</sub> and 257744 kg CO<sub>2</sub> for the period April 2019 – March 2020. The total emissions of 1018424 kgCO<sub>2</sub> is expected to be generated by the institution accounting to about 0.63 tonnes per student on a per capita basis calculation.

The college campus spreading over 14.14 hectares of land diverse with rubber plantation, coconut plantation, trees and shrubs, potted plants and lawns is a potential source for carbon sequestration. The above ground biomass provided carbon are calculated with the help of carbon equivalency factors deduced from literature review. The below ground soil Carbon was estimated by Kerala Forest Research Institute by conducting carbon study on soil obtained from a set of sample test pits. The abundance of vegetation has elevated the chances of the institution to pose itself as a carbon neutral institution as the sequestered carbon is much more than the estimated carbon emission.

True Copy Attested

  
Dr. SUNNY JOSEPH KALAYATHANKAL  
M.Tech, MCA, M.Sc, M.Phil, B.Ed  
Ph.D (Computer Science), Ph.D (Maths)  
PRINCIPAL  
Jyothi Engineering College  
Cheruthuruthy P.O.- 679 531





14.01.2021

**SOILS/STR/03/2021**

Sri MG Cyriac  
Jyothi Engineering College

Sir,


The submitted samples were analyzed and the carbon stocks assessed are given below

Site	Soil carbon stocks (t / Ha)
PIT 1 U	79.09
PIT 1 M	56.11
PIT 1 L	63.36
PIT 2 U	15.78
PIT 2 M	35.90
PIT 2 L	56.65

Yours faithfully

SANDEEP S.  
Sr. Scientist, Dept. of Soil Science  
KFRI, Peechi

True Copy Attested


  
Dr. SUNNY JOSEPH KALAYATHANKAL  
M.Tech, MCA, M.Sc, M.Phil, B.Ed  
Ph.D (Computer Science), Ph.D (Maths)  
PRINCIPAL  
Jyothi Engineering College  
Cheruthuruthy P.O.- 679 531



**QUESTIONNAIRE FOR**  
**AICTE CLEAN AND SMART CAMPUS AWARD 2020**

Sr. No.	Sub Part	Questionnaire
1.	A	<p><b>Is the segregation &amp; measurement of different types of solid waste generated on campus being done?</b></p> <p>a. YES. SEGREGATION &amp; MEASUREMENT FOR EACH TYPE OF SOLID WASTE IS UNDERTAKEN.</p> <p>b. PARTIAL. NO SEGREGATION, BUT TOTAL SOLID WASTE GENERATED IS BEING MEASURED.</p> <p>c. NO. NO SEGREGATION/ MEASUREMENT UNDERTAKEN. ✓</p>
	B	<p><b>If the answer to 1.A is YES/PARTIAL, kindly provide the data in the enclosed format attached. (Format is enclosed in the mail)</b></p> <p><b>(To be arrived at from recorded data of last year)</b></p>
2.	A	<p><b>Does the institute have a dedicated staff for waste collection or disposal?</b></p> <p>a. NO</p> <p>b. YES ✓</p>
	B	<p><b>Does the institute segregate its solid waste at the source of the generation?</b></p> <p>a. NO</p> <p>b. YES ✓</p>
	C	<p><b>What in-house disposal facilities are used by the institute to dispose off the solid waste:</b></p> <p>a. NONE</p> <p>b. COMPOSTING UNIT</p> <p>c. BIOGAS PLANT</p> <p>d. BIO METHYLATION PLANT</p> <p>e. ORGANIC WASTE CONVERTER</p> <p>f. INCINERATORS ✓</p> <p>g. SANITARY LANDFILLS</p> <p>h. OTHERS – PLEASE SPECIFY</p>
	D	<p><b>Does your institution recognize the services for cleanliness of the campus by Sweeping/Cleaning staff?</b></p> <p>a. NO</p> <p>b. YES ✓</p>

True Copy Attested

  
**Dr. SUNNY JOSEPH KALAYATHANKAL**  
 M.Tech, MCA, M.Sc, M.Phil, B.Ed  
 Ph.D (Computer Science), Ph.D (Maths)  
 PRINCIPAL  
 Jyothi Engineering College



3.		<p><b>In case an in-house solid waste disposal facility is not available, then select the external agencies used by the institute to dispose off the solid waste:</b></p> <p>a. MUNICIPAL CORPORATION</p> <p>b. PRIVATE CONTRACTOR</p> <p>c. OTHERS - PLEASE SPECIFY</p>
4.	A	<p><b>Does the institute have any green club/sustainability cell?</b></p> <p>a. NO</p> <p>b. YES ✓</p>
	B	<p><b>If the answer to 4. A is YES, then provide the details of date of establishment, list of activities done, no. of Students/Faculty involved. Also, provide the documents/ Photographs wherever applicable.</b></p> <p><b>(Upload pdf of max size 1 mb)</b></p>
5.		<p><b>How does the campus waste/sewage/effluent disposal system function?</b></p> <p>a. NO SEPARATION OF DISCHARGE. THE DISPOSAL IS COMMON. ✓</p> <p>b. SYSTEM SEPARATES GREY AND BLACK WATER</p>
6.		<p><b>Does the institute recycle waste water?</b></p> <p>a. NO ✓</p> <p>b. YES</p>
7.		<p><b>How does the institute use recycled water?</b></p> <p>a. DUAL PLUMBING -FLUSHING</p> <p>b. GARDENING/ARBORICULTURE</p> <p>c. VEHICLE WASHING (VEHICLES INCLUDE INSTITUTE CARS, BUSES AND SOON)</p> <p>d. OTHERS – PLEASE SPECIFY</p>
8.		<p><b>What percentage of Wastewater recycling is being undertaken on the campus?</b></p> <p>a. NONE ✓</p> <p>b. UPTO 25%</p> <p>c. 25% - 40%</p> <p>d. ABOVE 40%</p> <p>e. MORE THAN 60%</p>
9.	A	<p><b>Does the institute use water-efficient appliances on the campus (e.g., using sensors/automated hand washing taps, high efficient toilet flush, etc)?</b></p> <p>a. NO ✓</p> <p>b. YES</p>
	B	<p><b>If yes, please mention the types of appliances and procedure used for water conservation which invariably used with Traditional and Indian Knowledge Systems aspects (IKS):</b></p> <p>----- NOT MORE THAN 200 WORDS</p> <p style="text-align: right;">Dr. SUNNY JOSEPH KALAYATHANKAL M.Tech, MCA, M.Phil, B.Ed Ph.D (Computer Science), Ph.D (Maths) PRINCIPAL</p>

10.	A	<p><b>Whether the institute conducts the Energy audit?</b></p> <p>a. NO</p> <p>b. YES ✓</p>
	B	<p><b>If answer to 10. A is YES, then provide the Energy Audit Report of your institutewhich includes ( yearly per capita electricity consumption of the institute, percentage of energy efficient appliances in the campus (to include star-rated appliances, LED light bulbs, sensor based automatic light, appliances based on Traditional Indian Knowledge systemetc.)</b></p>
11.		<p><b>Which of the following renewable energy source(s) is/are present on the campus? (You may select one or more from the following answers)</b></p> <p><b>In Others, Please specify source based on Traditional Indian Knowledge system. If any.</b></p> <p>a. NONE</p> <p>b. SOLAR POWER ✓</p> <p>c. BIODIESEL</p> <p>d. CLEAN BIOMASS</p> <p>e. GEOTHERMAL</p> <p>f. WIND POWER</p> <p>g. HYDROPOWER</p> <p>h. COMBINE HEAT ANDPOWER</p> <p>i. OTHERS (PLEASE SPECIFY)</p>
12.		<p><b>What percentage of total electricity use is drawn from renewable electricity?</b></p> <p>a. NONE</p> <p>b. 1% - 25% ✓</p> <p>c. 25% -50%</p> <p>d. 50% -75%</p> <p>e. MORE THAN 75%</p>
13.	A	<p><b>Does the campus have a sub - meters to monitor and assess the resource consumption patterns of major work areas (eg Mess building, hostel, administrative blocks etc)?</b></p> <p>a. NO</p> <p>b. YES✓</p>
	B	<p><b>If answer to above is 'YES', is the energy metering system made 'online' where the consumption pattern can be seen in real/ near real time through a dashboard?</b></p> <p>a. NO✓</p> <p>b. YES</p>
	C	<p><b>If answer to above is 'YES', has any mobile app been developed for viewing the dashboard on smart phone?</b></p> <p>a. No✓</p> <p>b. YES</p>

True Copy Attested

Dr. SUNNY JOSEPH KALAYATHANKAL  
M.Tech, MCA, M.Sc., M.Phil, B.Ed  
Ph.D (Computer Science), Ph.D (Maths)  
PRINCIPAL  
Jyothi Engineering College



14.	A	Is eco-friendly conveyance being used for local in-house mobility by on campus residents (including day workers)? a. NO ✓ b. YES
	B	If yes, please mention the various of conveyance (eg golf carts, battery skate boards, battery assisted pedal bicycle etc.)
15.		What is the total green area per capita of the campus? (Sq.mtr.) <span style="border: 1px solid black; padding: 2px 20px;">77.66</span>
16.		Please provide the estimated percentage of total green area occupied by each of the following: a. LAWN(GRASS) <u>8500</u> SQMTRS b. TREE COVER(WOODEDAREA) <u>108000</u> SQMTRS c. SHRUBSANDHEDGES <u>750</u> SQMTRS d. POTTEDPLANTS <u>250</u> SQMTRS e. OTHERS –POND, COCONUT PLANTATION <u>14530</u> SQMTRS
17	A	DOES THE INSTITUTE HAVE A CAMPUS BIODIVERSITY REGISTER? a) NO b) YES ✓
	B	If answer to 17. A is YES, then How many species of plants does the campus have? a. LESS THAN 10 b. 11 TO20 c. 21 TO30 d. MORE THAN 30 ✓
18.	A	How many plants have been sowed per capita in the last year in/Outside the campus? a. LESS THAN 5 ✓ b. 5 TO10 c. 10 TO20 d. MORE THAN 20
	B	How many number of Students/ Faculty/Staff involved in the above initiative? -----NOT MORE THAN 25 WORDS ----- A group of 100 students and 4 staff members distributed saplings to nearby houses and encouraged care for nature in the last academic year.
19.		Is the campus green rated? a. NOTRATED ✓ b. RATED
20.	A	Does the campus calculate its overall carbon footprint? a. NO b. YES ✓
	B	If yes, please mention the recent score withdate: SCORE NIL DATE 30/09/2020

True Copy Attested

Dr. SUNNY JOSEPH KALAYATHANKAL  
M.Tech, MCA, M.Sc, M.Phil, B.Ed  
Ph.D (Computer Science), Ph.D (Maths)  
PRINCIPAL  
Jyothi Engineering College  
Cheruthuruthy P.O.- 679 531





Smart Campus Cloud Network

	C	<p><b>What are the steps institute has taken to reduce its carbon footprints?</b></p> <p><b>Steps to Reduce Carbon Foot Prints</b></p> <ol style="list-style-type: none"> <li>1) Planting more trees/shrubs in the premises of the college</li> <li>2) Modernization of various equipment in the college and hostels</li> <li>3) Using renewable form of energy- solar power</li> <li>4) Use of led and similar type of low energy consuming electrical appliances</li> </ol>
21.	A	<p><b>Is there active students' involvement in Govt. initiated/private organization initiated/self- initiated green programs and projects?</b></p> <ol style="list-style-type: none"> <li>a. NO</li> <li>b. YES✓</li> </ol>
	B	<p><b>If YES, Number of projects carried out in the last academic year: -</b></p> <ol style="list-style-type: none"> <li>a. 0 TO5</li> <li>b. 6 TO10</li> <li>c. 11 TO20</li> <li>d. MORE THAN 20✓</li> </ol>
	C	<p><b>If YES, How many number of students involved in the above initiative?</b></p> <p>-----NOT MORE THAN 25 WORDS -----</p> <p>In the last academic year, 100 students involved in various initiatives such as Swatch Bharat Summer Internship, Minimize Plastic Waste – Awareness Campaign, HarithaJyothi - Plantation Drive, Kalamadalam Frontage Cleaning drive, Highway side cleaning</p>
22	A	<p><b>Does the institute have valid documented and well-circulated green policies/Guidelines?</b></p> <ol style="list-style-type: none"> <li>a. NO</li> <li>b. YES✓</li> </ol>
	B	<p><b>Do you have any approval/ authorisation from pollution control board/ statutory bodies? If applicable, please provide the copy of the relevant approval(s).</b></p> <p><b>(For eg. E-WASTE RULES 2016 CLEARANCE, HAZARDOUS WASTE RULES 2016 CLEARANCE, SOLID WASTE RULES 2016 CLEARANCE, BIO-MEDICAL WASTE RULES 2016 CLEARANCE, AIR ACT 1981, WATER ACT 1974, ENVIRONMENT PROTECTION ACT 1986, GREEN POLICIES, OTHERS)</b></p> <p>Yes, approval of Kerala state pollution control board</p> <p>Proof is attached</p>
23	A	<p><b>Does the institution oversee any programme/Project/Campaign for implementation of green programs in the neighboring communities?</b></p> <ol style="list-style-type: none"> <li>a) NO</li> <li>b) YES✓</li> </ol>
	B	<p><b>If answer to 23. A is YES, then following information be provided (You may select one or more from the following)</b></p> <ol style="list-style-type: none"> <li>a. Green programs during Lockdownperiod(COVID-19)</li> <li>b. Any green program using Indian Knowledge System</li> <li>c. Anyother✓</li> </ol>

True Copy Attested

**DR. SOUVEN JOSEPH KALAYATHANKAL**  
M.Tech, MCA, M.Sc, M.Phil, B.Ed  
Ph.D (Computer Science), Ph.D (Maths)  
**PRINCIPAL**

Jyothi Engineering College



	C	<p><b>How many number of Students/Faculty/Staff involved in the above initiative?</b></p> <p>The following green program during covid 19 period</p> <p>A) Program for conservation of Bharathapuzha , 2nd longest river in the state ,</p> <p>B) Conducted 12 programs during 2019 by the NSS of the institution</p> <p>C) First programme is being carried out by civil department with collaboration a group of people namely Friends of Bharatahapuzha (FOB)headed by E .Sreedharan ,the most efficient civil engineer in India , popularly known as metro man. A comprehensive study is underway to propose remedies for pollution and for conservation of the river .</p> <p>Other programmes are carried out by national service scheme of the institution and the total participants for all are more than 100</p>
24	A	<p><b>Has the institute participated in UBA/SAGY/ One student one Tree/ Jal Shakti Abhiyan?</b></p> <p>a. NO</p> <p>b. YES ✓</p>
	B	<p><b>If YES, how many programs were done in the past year?</b></p> <p>a. 0 TO5 ✓</p> <p>b. 6 TO10</p> <p>c. 11 TO20</p> <p>d. MORE THAN 20</p>
25	A	<p><b>Does the institute participate in technology or innovation-related programs/competitions (ex. Hackathon)?</b></p> <p>a. NO</p> <p>b. YES✓</p>
	B	<p><b>If YES, please mention the No of programs/competitions participated from June 2019 to September 2020.</b></p> <p>9</p>
26		<p><b>Does the campus participate in climate change related events (workshops, conferences, and training)?</b></p> <p>a. NO ✓</p> <p>b. YES</p>
27		<p><b>How many climate change-related events did the institute organize on/off campus in the past academic year?</b></p> <p>&lt;NUMERICVALUE&gt;</p>
28	A	<p><b>Has the campus partnered with any external organizations to implement a technologically-driven environment and sustainable solutions?</b></p> <p>a. NO</p> <p>b. YES✓</p>
	B	<p><b>If yes, how many collaborations were done in last one year?</b></p> <p>2</p>
29		<p><b>Are there signage's on the campus that help in promoting hygiene, sanitation and eco-friendly habit lifestyle?</b></p>

True Copy Attested

Dr. SUNNY JOSEPH KALAYATHANKAL  
M.Tech, MCA, M.Sc, M.Phil, B.Ed  
Ph.D (Computer Science), Ph.D (Maths)

PRINCIPAL  
Jyoti Engineering College  
Cheruthuruthy P.O - 670 504

30		<p><b>Does the Institute have smart displays and interactive models?</b></p> <p>a. NO</p> <p>b. YES✓</p>
31	A	<p><b>Is there any paperless policy implemented on the campus?</b></p> <p>a. NO</p> <p>b. YES ✓</p>
	B	<p><b>What is the extent of the paperless office implemented in the institute?</b></p> <p>a. LESS THAN 25%✓</p> <p>b. 25 – 50%</p> <p>c. 50 -75%</p> <p>d. MORE THAN 75%</p>
32	A	<p><b>Has the campus networked its sensors to create smart campus?</b></p> <p>(a) NO ✓</p> <p>(b) YES</p>
	B	<p><b>If yes, what are the type of applications being utilized for monitoring and control of such utilities? (You may select one or more from the following answers)</b></p> <p>a. WEB APPLICATION(DASHBOARD)</p> <p>b. MOBILE APPLICATION</p> <p>c. MAIL ALERT</p> <p>d. SMS BASEDALERT</p> <p>e. OTHERS</p>
33		<p><b>Is the campus entry based on ease of access via Smart Card/ Biometrics system?</b></p> <p>a. NO✓</p> <p>b. YES</p>
34		<p><b>Does the campus have tools for automation of functionalities like Timetable, Library Management, Book Issue/ Return, Dues Collection, student dash board, parent dash board etc.?</b></p> <p>a. NO</p> <p>b. YES✓</p>
35.		<p><b>Has the campus implemented smart solutions like ERP for administration, academic,and finance?</b></p> <p>a. NO</p> <p>b. YES✓</p>
36		<p><b>Has the campus implemented an online platform like MOODLE for teaching and learning process?</b></p> <p>a. NO</p> <p>b. YES✓</p>
37.	A	<p><b>Does the institute restrict fuel based vehicle on campus and allow only selective barrier-free entry/exit?</b></p> <p>a. NO ✓</p>

True Copy Attested

Dr. SUNNY JOSEPH KALAYATHANKAL

M.Tech, MCA, M.Sc, M.Phil, B.Ed

Ph.D (Computer Science), Ph.D (Maths)

PRINCIPAL

.Ivathi Engineering College





SmartCampusCloudNetwork

	B	If the answer to above question is <u>YES</u> , does the campus have smart-assist parkingsystem at a central parking location (WiFi, Sensor-enabledparking)? a. NO✓ b. YES
38.		Does the campus have Security and Surveillance system? a. NO b. YES✓
39.	A	Does the institute support and encourage ease of accessibility for Divyangjan? a. NO b. YES✓

	B	If yes, mention the types of the assistance being facilitated for independent accessibility. (You may select one or more from the following answers)  a. RAMP b. METALSTRIPS c. BATTERY-ASSISTEDWHEELCHAIRS d. SEPARATE WASHROOMS✓ e. TACTILE PAVING FOR THEBLIND f. OTHERS
40.		Provide the number/Percentage(%) of people reporting sick in last one year in the health centre (if any) of the institute?  In the last year, 164 people reported in the health centre because of fever, injuries, C & D and for BP measurement.
41.		Has the institute set up the SDGs (Sustainable Development Goals) related teaching courses in the curriculum or additional activities? a. NO b. YES✓
42.		Is the campus measuring the Air Quality in and around their campus?  a) No✓ b) YES
43.		Has your institute promoted the Indian Knowledge Systems (IKS) in the curriculum or related activities? a. NO b. YES✓
44.	A	Did you raise the awareness on the AICTE's environmental policy? a) NO b) YES✓

True Copy Attested

Dr. SUNNY JOSEPH KALAYATHANKAL  
M.Tech, MCA, M.Sc, M.Phil, B.Ed  
Ph.D (Computer Science), Ph.D (Maths)  
PRINCIPAL  
Jyothi Engineering College



	B	<p><b>If YES, What are the specific activities that you developed related to AICTE Environmental Policy? (You may Select one or more from the following answers)</b></p> <ul style="list-style-type: none"> <li>g. NON -CREDIT /CREDIT COURSE ON ENVIRONMENTS SCIENCES</li> <li>h. SMART INDIA HACKATHON SOLVING ENVIRONMENTAL CHALLENGES</li> <li>i. INCLUSION IN CURRICULUM ✓</li> <li>j. ENVIRONMENTAL AWARDS</li> <li>k. OTHERS (PLEASE SPECIFY) ✓</li> </ul> <p>- Add on course on environments subjects</p>
45		<p><b>What is the financial saving/benchmark impact which has been achieved by turning your institute into smart campus?</b></p> <p>By turning our campus in to a smart one we have achieved significant improvement in aspects of our working . We have mobile alert for giving attendance information to parents. We have financial gain by reducing paper usage.</p>
46		<p><b>What change has been achieved by implementing Smart Technologies in your campus which was not achievable prior to such implementation</b></p> <p>By adopting various smart technology options we could improve the overall performance of the institution in respect of administration, improvement in teaching and learning process, improvement in monitoring attendance etc.</p>
47		<p><b>How the Smartness is being leveraged physically by on campus society (Students, Faculty, Administrators etc.)</b></p> <p>Students Faculties, Managers use the tools regularly in their day to day engagement and we are constantly deriving advantages in all spheres of working of the institute</p>
48		<p><b>Whether the institute use any tools like IOT /Big data analysis /AI for students Equity/adaptive learning?</b></p> <p>The digitally connected campuses enhance student learning and environmental sustainability. IoT innovation in the campus starts from whiteboards and connected school buses, moving toward smart lighting and security cameras—all of which provide real-time data and valuable insights to students, parents, faculty and administration. The most common IoT devices used in the classroom include: Interactive whiteboards, Student ID cards, automated attendance tracking system etc. This implementation let faculty to focus more on the primary work that is, teaching and to focus less on managing the workflow of the classroom. Campus automated software CampusBook used in our campus are used to track students who skip their classes, send alerts help students to concentrate academic work regularly. Students can use smartphones, PDA to access their homework assignments, and test performance through online portals. Videos can be uploaded in the cloud, online video Lecturing enables Students to attend classroom lectures remotely.</p> <p>-</p>
49		<p><b>Does institute use any Emerging Technologies like Artificial Intelligence, IOT, Data Analysis etc. for helping disabled students or Rural/Agriculture Sector to promote Entrepreneurship/skilling/health monitoring/Waste Management?</b></p> <p>YES. We use emerging technologies for helping disabled people for their improvement. For example, Lyza, for women, is a sanitary napkin developed by students with the support of institute that gives an alert about the time to change the pads through a mobile application. Lyza is specially designed for paralyzed women, autistic and mentally retarded women. With the invent of the product women will be more safe and comfortable in using pads as our product contains pure cotton.</p>

Dr. SUNNY JOSEPH KALAYANKAL  
M.Tech, Women's Studies  
Ph.D (Sociology)  
PRINCIPAL  
St. Xavier's College





SmartCampusCloudNetwork

50		<p><b>Does the institute have any smart system to monitor fire safety measures?</b></p> <p>No</p>
51		<p><b>Has Institute taken any step for ensuring cyber security related issues?</b></p> <p>The campus is equipped with a Unified Threat Management appliance to secure the network against harmful intrusions. The appliance currently installed is Cyberoam 300ING. Considering the increasing threats and extensive usage of the Internet the IT Team here is currently studying various options available in the market to upgrade the same with the latest solutions.</p> <p>Students are encouraged to learn ethical hacking and find loopholes in our own network and applications. OS updates are done for better security.</p> <p>The campus automation management system, named CampusBook, is developed in-house to ensure that the data is safe and secure.</p> <p>A central server running Active Directory Domain Service (AD DS) authenticates and authorizes all users and computers assigning and enforcing security policies for all computers and installing or updating software.</p> <p>Manual backups are taken periodically to safeguard the centrally stored data. The team is also studying the opportunities for implementing the automated backup system. Staff &amp; Students are advised and proper awareness is provided on best security measures to be followed when using a system.</p>
52		<p><b>Whether the institute has been awarded any kind of special recognition? If yes, Provide details with photographs/ Document.</b></p> <p>Accreditation by National Board of Accreditation for 5 branches ie Civil, Mechanical, Electrical, computer science and electronics and communication Accreditation by National Assessment and Accreditation Council (NAAC), Atal Ranking of Institutions on Innovation Achievements</p> <p>Proof is attached</p>
53		<p><b>Has the institute planted any type of Traditional Medicinal Herbal plants in the campus based on Indian Knowledge System (IKS)? If yes, Please provide the List and Photographs.</b></p> <p>Yes</p> <p>Details attached</p>
54		<p><b>Provide the case study on Implementation of Traditional Indian Knowledge System (IKS) which includes food, water, Sanitation, Health, Management, Rain water harvesting etc. relevant to guidelines of Clean and Smart campus Award. Give details not more than 150 words (it may include pictorial representation/Videos/Photographs may also attached pdf of max size 1 MB)</b></p> <p><i>(Please note:-Separate award will be given to the deserving institute in this context)</i></p> <p>Rain water harvesting system</p>

True Copy Attested

\*\*\*\*\*

Dr. SUNNY JOSEPH KALAYATHANKAL  
M.Tech, MCA, M.Sc, M.Phil, B.Ed  
Ph.D (Computer Science), Ph.D (Maths)  
PRINCIPAL  
Jyothi Engineering College



True Copy Attested

*ema*  
Dr. SUNNY JOSEPH KALAYATHANKAL  
M.Tech, MCA, M.Sc, M.Phil, B.Ed  
Ph.D (Computer Science), Ph.D (Maths)  
PRINCIPAL  
Jyothi Engineering College  
Cheruthuruthy P.O.- 679 531



c) Minimum Rate for Analysis = Rs 250

d) Concessional rate for all staff and students @60% of prescribed cost subjected to a minimum of Rs 150

e) For residents of Panjal and Vallathol nagar panchayath the rate is fixed at 75% of the total cost with minimum of Rs 200-copy of ration card / other proof to be produced

f) All the payments in advance

## 2) Role of Office Bearers for Analysis of Water Samples and Answering of Web Site Questions

a) Acceptance of water sample for testing after initial interaction /Fixing the parameters and fee / verification of remittance of fee in the office – Co-Ordinator / HOD Civil/Asst co-ordinator)

b) Fee will be remitted in advance in the college office as per the guidelines at the time of sample acceptance

c) Supervision of laboratory activities – Co-Ordinator/ Asst co-ordinator

d) Verification and interpretation of results and secondary interaction- Co-Ordinator / HOD civil

e) Result to be prepared by the co-ordinator sent to the principle through the HOD civil

f) Verification of all Activities and files , Remittance of fee ,Signing of Results etc – Principal

## 3) Answering of Web Site Questions

a) Activities of Co-ordinator

All the questions will be reproduced in the concerned register and answers will be prepared in consultation with the consultants

b) Activity of HOD civil

Verification of answers and posting in the website

## 4) Publication of small booklets in Malayalam

Final approval to be given by Fr Roy Vadakken

## 5) Training programmes for housewife's on water related subjects

Generally permitted but the normal procedure as per the college regulation is to be followed

True Copy Attested

SUNNY JOSEPH KALAYATHANKAL  
M.Tech, MCA, M.Sc, M.Phil, B.Ed  
Ph.D (Computer Science), Ph.D (Maths)  
PRINCIPAL

Jyothi Engineering College  
Cheruthuruthy P.O.- 679 531



- 2) Approval of Role of Office Bearers for Analysis of Water Samples
- 3) Approval of Role of Office Bearers in Answering of Web Site Questions
- 4) Approval of Proposed Current Activities
- 5) Approval of urgent requirements of the Centre
- 6) Approval and discussion on interaction table and format for entering result

## Approval has been given as detailed below

1 a) Proposed rates for water testing are approved as under

Sl no	Parameter	Rate for Analysis in Rupees
1	Turbidity	20
2	pH	20
3	TDS	20
4	Alkalinity	50
5	Total Hardness	50
6	Chloride	60
7	Fluoride	60
8	Nitrate	70
9	Iron	60
10	Manganese	60
11	Suphate	40
12	Sulphide	40
13	DO	50
14	COD	100
15	BOD	120
16	Oil and grease	200
17	Residual chlorine	15
18	Suspended solids	40
19	Coliform /100ml	250
20	E_Coli /100ml	250

True Copy Attested

### Additional provisions as regards to water testing

b) The parameters to be tested is to be fixed after interaction with the customer depending upon his interest and his requirement. Person interacting from the CWRI shall be the Co-ordinator/ BOD civil/Asst Co-ordinator

Dr. SUNNY JOSEPH KALAYATHANKAL  
 M.Tech, MCA, M.Sc, M.Phil, B.Ed  
 Philo (Open Order Co-ordinator/ BOD)  
 PRINCIPAL  
 Jyothi Engineering College  
 Cheruthuruthy P.O.- 679 531





# Jyothi Engineering College

NAAAC Accredited College with 100% Accredited Programmes

Approved by AICTE & affiliated to APJ Abdul Kalam Technological University

A CENTRE OF EXCELLENCE IN SCIENCE & TECHNOLOGY BY THE CATHOLIC ARCHDIOCESE OF TRICHUR

JYOTHI ENGINEERING COLLEGE, CHERUTHURUTHY, THIRUVANANTHAPURAM - 679531

NBA accredited B.Tech Programmes in Computer Science & Engineering, Electronics & Communication Engineering, Electrical & Electronics Engineering and Mechanical Engineering valid for the academic years 2014-2023. NBA accredited B.Tech Programmes in Civil Engineering valid for the academic years 2017-2022

## DEPARTMENT OF CIVIL ENGINEERING

### CENTRE FOR WATER RESEARCH & EDUCATION

Approved by Kerala State Pollution Control Board as a commercial laboratory  
vide order no : PCB/Lab approval 85/2019/valid upto 29.10.2023

### Water Quality Test Data

Name of Customer : Jyothi Canteen Water Sample

Type of Source : Tap Water

Date of Collection : 11.09.23

Date of Testing : 11.09.23 - 13.09.23

Standard Followed : IS 10500 - 2012

S/no	Parameter	Unit	Acceptable limit	Permissible limit	Content in the sample
1	Turbidity	NTU	1	5	0.2
2	pH	No Unit	6.5-8.5	No relaxation	6.9
3	TDS	Mg/Litre	500	2000	104
4	Alkalinity	Mg/Litre	200	600	24
5	Total Hardness	Mg/Litre	200	600	90
6	Chloride	Mg/Litre	250	1000	22
7	Fluoride	Mg/Litre	1	1.5	Nil
8	Nitrate	Mg/Litre	45	No relaxation	0.5
9	Iron	Mg/Litre	0.3	1.0	0.09
10	Manganese	Mg/Litre	0.1	0.3	Nil
11	Sulphate	Mg/Litre	200	400	14
12	Sulphide	Mg/Litre	0.05	No relaxation	—
13	Dissolved Oxygen	Mg/Litre	—	—	—
14	COD	Mg/Litre	—	—	Nil
15	BOD	Mg/Litre	—	—	—
16	Coliform/100 ml	Number	Nil	Nil	Nil
17	E_coli/100 ml	Number	Nil	Nil	—

### Remarks and Recommendations :

⇒ Residual Chlorine = 0.2 mg/L

All the tested parameters are within limit.

Dr. JOSE P THERATIL  
Principal  
Jyothi Engineering College  
Cheruthuruthy - 679531



Dr. JOSE P THERATIL  
Principal  
Jyothi Engineering College  
Cheruthuruthy - 679531

True Copy Attested

13/9/2023  
M. G. Cyriac

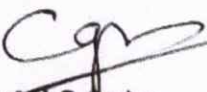
www.jecc.ac.in || info @jecc.ac.in

## Water Quality Test Results of Jyothi Engineering College

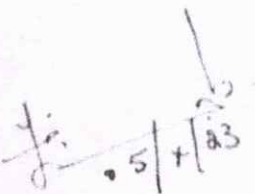
Dated 25-9-2023

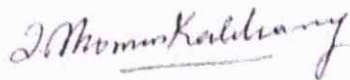
Sl no	Location	pH	Turbidity	TDS	RC
1	Boys Hostel	7.4	0.0	184	0.2
2	Purifier – Decennial Hall	7.0	0.0	180	Trace
3	Purifier – Civil Passage	7.1	0.0	179	Trace
4	Water Cooler ADM block	7.3	0.0	178	Trace
5	Purifier ME passage	7.1	0.0	179	Trace
6	Ladies hostel	7.4	0.0	182	0.2

Remarks – chlorination is sufficient

  
Prof M.G. Cyriac  
Co-ordinator  
Centre for Water Research and Education  
Jyothi Engineering College



  
5/1/23





True Copy Attested

  
Dr. JOSE P THERATTIL  
Principal  
Jyothi Engineering College  
Cheruthuruthy - 679531




## Water Quality Test Results of Jyothi Engineering College

Dated 30.10.2023

Sl no	Location	pH	Turbidity	TDS	RC
1	Boys Hostel	6.8	0.1	128	0.2
2	Purifier – Decennial Hall	6.9	0.1	118	Trace
3	Purifier – Civil Passage	7	0.1	112	Trace
4	Water Cooler ADM block	7.1	0.1	114	Trace
5	Purifier ME passage	7.0	0.1	118	Trace
6	Ladies hostel	6.5	0.2	124	0.2

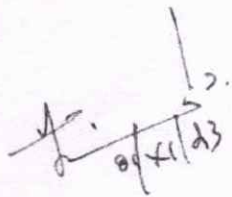
Remarks – Chlorination is sufficient

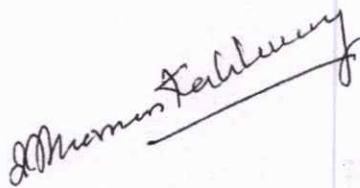
  
Prof M.G. Cyriac

Co-ordinator

Centre for Water Research and Education

Jyothi Engineering College

  
30/10/23





Dr. JOSE P THERATTIL  
Principal  
Jyothi Engineering College  
Cheruthuruthy - 679531

True Copy Attested

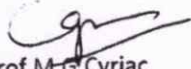


## Water Quality Test Results of Jyothi Engineering College

Dated 30.11.2023

Sl no	Location	pH	Turbidity	TDS	RC
1	Boys Hostel	6.7	0.2	186	0.2
2	Purifier – Decennial Hall	7.1	0.1	178	0.1
3	Purifier – Civil Passage	7.0	0.1	176	Trace
4	Water Cooler ADM block	7.0	0.1	176	Trace
5	Purifier ME passage	7.0	0.1	179	Trace
6	Ladies hostel	6.8	0.2	184	0.2


Remarks – Chlorination is sufficient

  
Prof M.G.Cyriac

Co-ordinator

Centre for Water Research and Education

Jyothi Engineering College

  
7/12/23

  
Dr. JOSE P THERATTIL  
Principal  
Jyothi Engineering College  
Cheruthuruthy - 679531



True Copy Attested



## Water Quality Test Results of Jyothi Engineering College

Dated 15.1.2024

Sl no	Location	pH	Turbidity	TDS	RC
1	Boys Hostel	7.2	0.2	182	0.2
2	Purifier – Decennial Hall	7.0	0.1	178	0.1
3	Purifier – Civil Passage	7.0	0.1	176	Trace
4	Water Cooler ADM block	7.0	0.1	176	Trace
5	Purifier ME passage	7.0	0.1	179	Trace
6	Ladies hostel	7.1	0.2	180	0.2

Remarks – Chlorination is sufficient

*A. Thomas Kallay*



*Cg*

**Prof. M.G. CYRIAC**  
Coordinator  
Centre for Water Research & Education  
Jyothi Engineering College, Cheruthuruthy  
Thrissur - 679 821



True Copy Attested

*Jose P Therattil*  
**Dr. JOSE P THERATTIL**  
Principal  
Jyothi Engineering College  
Cheruthuruthy - 679531

# Water Quality Test Results of Jyothi Engineering College

Dated 15.02.2024

Sl n o	Location	pH	Turbidity	TDS	RC
1	Boys Hostel	6.9	0.0	212	0.2
2	Purifier – Decennial Hall	7.0	0.0	210	Trace
3	Purifier – Civil Passage	7.0	0.0	210	Trace
4	Water Cooler ADM block	7.1	0.0	210	Trace
5	Purifier MR passage	7.1	0.0	212	Trace
6	Ladies hostel	7.0	0.0	210	0.2

Remarks – Tested parameters are within limit.

  
Prof M.G.Cyriac

Co-ordinator

Centre for Water Research and Education

Jyothi Engineering College

**Prof. M.G. CYRIAC**  
Coordinator  
Centre for Water Research & Education  
Jyothi Engineering College, Cheruthuruthy  
Thrissur - 679 531



True Copy Attested

10. 20/2/24





**Dr. JOSE P THERATTIL**  
Principal  
Jyothi Engineering College  
Cheruthuruthy - 679531

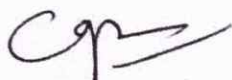


# Water Quality Test Results of Jyothi Engineering College

Dated 15.03.2024

Sl no	Location	pH	Turbidity	TDS	RC
1	Boys Hostel	6.9	0.0	172	0.2
2	Purifier – Decennial Hall	7.0	0.0	170	Trace
3	Purifier – Civil Passage	7.0	0.0	171	Trace
4	Water Cooler ADM block	7.1	0.0	170	Trace
5	Purifier MR passage	7.0	0.0	170	Trace
6	Ladies hostel	6.9	0.0	171	0.2

Remarks – Tested parameters are within limit.



Prof M.G.Cyriac

Co-ordinator

Centre for Water Research and Education

Jyothi Engineering College

**Prof. M.G. CYRIAC**  
Coordinator  
Centre for Water Research & Education  
Jyothi Engineering College, Cheruthuruthy  
Thrissur - 679 531



True Copy Attested



20/3/24

*ammb...*



**Dr. JOSE P THERATTIL**  
Principal  
Jyothi Engineering College  
Cheruthuruthy - 679531

# Water Quality Test Results of Jyothi Engineering College

Dated 17.04.2024

Sl n o	Location	pH	Turbidity	TDS	RC
1	Boys Hostel	7.1	0.0	172	0.2
2	Purifier – Decennial Hall	7.0	0.0	170	Trace
3	Purifier – Civil Passage	7.0	0.0	170	Trace
4	Water Cooler ADM block	7.1	0.0	172	Trace
5	Purifier MR passage	7.1	0.0	169	Trace
6	Ladies hostel	7.0	0.0	171	0.2

Remarks – Tested parameters are within limit.

Prof M.G.Cyriac

Co-ordinator

Centre for Water Research and Education

Jyothi Engineering College

**Prof. M.G. CYRIAC**  
Coordinator  
Centre for Water Research & Education  
Jyothi Engineering College, Cheruthuruthy  
Thrissur - 679 531



True Copy Attested



**Dr. JOSE P THERATTIL**  
Principal  
Jyothi Engineering College  
Cheruthuruthy - 679531

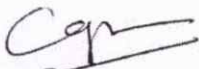


# Water Quality Test Results of Jyothi Engineering College

Dated 6/6/2024

Sl n o	Location	pH	Turbidity	TDS	RC
1	Boys Hostel	7.1	0.0	172	0.2
2	Purifier – Decennial Hall	6.9	0.0	170	Trace
3	Purifier – Civil Passage	7.0	0.0	171	Trace
4	Water Cooler ADM block	7.1	0.0	170	Trace
5	Canteen	7.0	0.0	170	Trace
6	Ladies hostel	7.0	0.0	171	0.2

Remarks – Tested parameters are within limit.

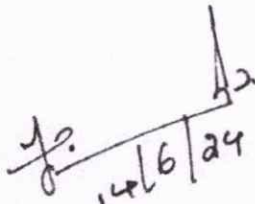
  
Prof M.G.Cyriac

Co-ordinator

Centre for Water Research and Education

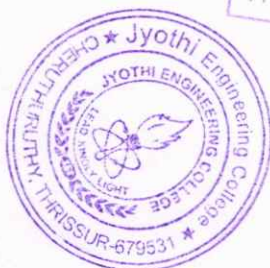
Jyothi Engineering College

Prof. M.G. CYRIAC  
Coordinator  
Centre for Water Research & Education  
Jyothi Engineering College, Cheruthuruthy  
Thrissur - 679 531

  
14/6/24



True Copy Attested



  
Dr. JOSE P THERATTIL  
Principal  
Jyothi Engineering College  
Cheruthuruthy - 679531

# Water Quality Test Results of Jyothi Engineering College

Dated 17.07.2024

Sl no	Location	pH	Turbidity	TDS	RC
1	Boys Hostel	7.1	0.0	106	0.2
2	Purifier – Decennial Hall	7.1	0.0	102	Trace
3	Purifier –EEE passage	7.1	0.0	102	Trace
4	Water Cooler ADM block	7.1	0.0	104	Trace
5	Canteen	7.2	0.0	110	Trace
6	Ladies hostel	7.0	0.0	108	0.2

Remarks – Tested parameters are within limit.

Prof M.G.Cyriac

Co-ordinator

Centre for Water Research and Education

Jyothi Engineering College



True Copy Attested

*[Signature]*  
Prof. M.G. CYRIAC  
Coordinator  
Centre for Water Research & Education  
Jyothi Engineering College, Cheruthuruthy  
Thiruvananthapuram - 679 501

*[Signature]*  
Dr. JOSE P THERATTIL  
Principal  
Jyothi Engineering College  
Cheruthuruthy - 679531

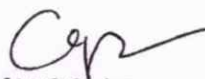


# Water Quality Test Results of Jyothi Engineering College

Dated 23.08.2024

Sl no	Location	pH	Turbidity	TDS	RC
1	Boys Hostel	6.9	0.1	122	0.2
2	Purifier – Decennial Hall	7.1	0.2	131	Trace
3	Purifier –EEE passage	7.1	0.0	132	Trace
4	Water Cooler ADM block	7.00	0.3	104	Trace
5	Canteen	7.2	0.2	110	Trace
6	Ladies hostel	7.0	0.0	108	0.2

Remarks – Tested parameters are within limit.



Prof M.G.Cyriac

Co-ordinator

Centre for Water Research and Education

Jyothi Engineering College

**Prof. M.G. CYRIAC**  
Coordinator  
Centre for Water Research & Education  
Jyothi Engineering College, Cheruthuruthy  
Thrissur - 679 531

True Copy Attested



**Dr. JOSE P THERATTIL**  
Principal  
Jyothi Engineering College  
Cheruthuruthy - 679531

# Water Quality Test Results of Jyothi Engineering College

Dated 23/9/2024

Sl no	Location	pH	Turbidity	TDS	RC
1	Boys Hostel	7.0	0.1	166	0.2
2	Purifier – Decennial Hall	6.9	0.0	174	Trace
3	Purifier – Civil Passage	7.0	0.0	171	Trace
4	Water Cooler ADM block	7.1	0.0	174	Trace
5	Canteen	7.0	0.0	170	Trace
6	Ladies hostel	7.0	0.2	168	0.2

Remarks – Tested parameters are within limit.

Prof M.G. Cytirac

Co-ordinator

Centre for Water Research and Education

Jyothi Engineering College

Prof. M.G. CYTIRAC  
Coordinator  
Centre for Water Research & Education  
Jyothi Engineering College, Cheruthuruthy  
Thrissur - 679 831



True Copy Attested



*Dr. Jose P Therattil*

Dr. JOSE P THERATTIL  
Principal  
Jyothi Engineering College  
Cheruthuruthy - 679531



# Water Quality Test Results of Jyothi Engineering College

Dated 22.10.2024

Sl no	Location	pH	Turbidity	TDS	RC
1	Boys Hostel	7.1	0.1	172	0.2
2	Purifier – Decennial Hall	7.0	0.0	170	Trace
3	Purifier – Civil Passage	7.0	0.1	170	Trace
4	Water Cooler ADM block	7.1	0.1	172	Trace
5	Purifier MR passage	7.1	0.0	169	Trace
6	Ladies hostel	7.0	0.1	171	0.2

Remarks – Tested parameters are with in limit.



Prof M.G.Cyriac

Co-ordinator

Centre for Water Research and Education

Jyothi Engineering College

**Prof. M.G. CYRIAC**  
Coordinator

Centre for Water Research & Education  
Jyothi Engineering College, Cheruthuruthy  
Thiruvananthapuram - 679 531



True Copy Attested

23/10/24



**Dr. JOSE P THERATTIL**  
Principal  
Jyothi Engineering College  
Cheruthuruthy - 679531

## INTERNATIONAL DAY AGAINST DRUG ABUSE

**DATE: 26 JUNE 2023**

**VENUE: JYOTHI ENGINEERING COLLEGE**

### Introduction:

The NSS Unit 140, organized a rally at Jyothi Engineering College to raise awareness on international day against drug abuse.

### Event Details:

- The rally began at 12:30pm
- 30 volunteers were part of the rally

### Volunteer participation:

Our volunteers actively participated in the rally, demonstrating their commitment to spreading awareness about drug abuse.

### Community enlightenment:

The rally served as a platform to show the importance of the day and how using drug would affect one's mental health and physical health.

We aimed at people who are struggling with drugs and to help them from this situation.

### Conclusion:

International day against drug abuse rally at Jyothi engineering college was a significant initiative to promote awareness about drug abuse and how using drugs would affect one's health.

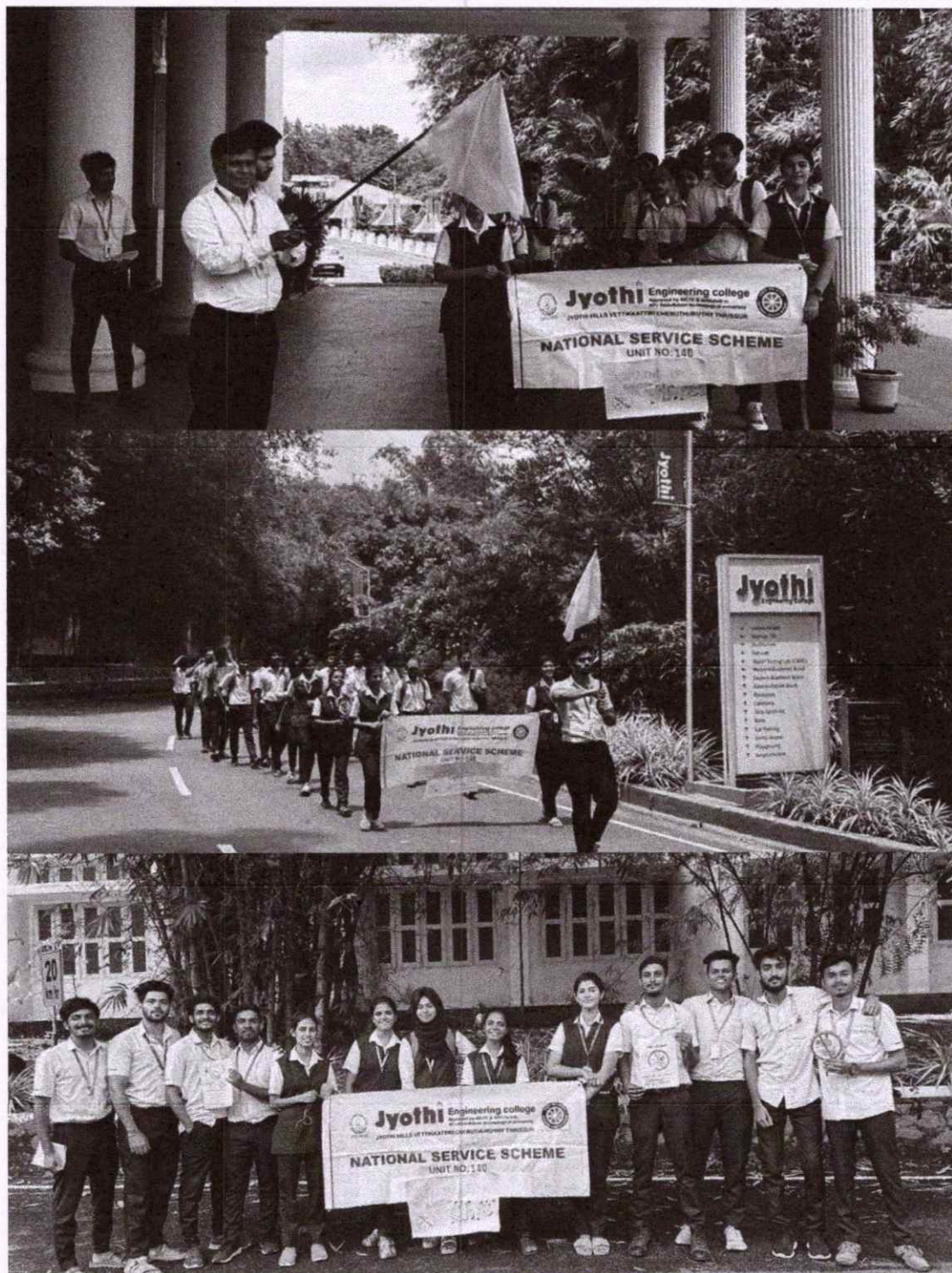
It symbolized our commitment to creating a society that is informed, compassionate, and supportive.

True Copy Attested



  
Dr. JOSE P THERATTIL  
Principal  
Jyothi Engineering College  
Cheruthuruthy - 679531





**Mr. Sibin Johny**  
NSS Programme Officer

True Copy Attested



**Dr. Jose P. Therattil**  
Principal

Dr. JOSE P THERATTIL  
Principal  
Jyothi Engineering College  
Cheruthuruthy - 679531



### GARDEN SETTING

**DATE: 24 JUNE 2023**

**VENUE: JYOTHI ENGINEERING COLLEGE**

#### **Introduction:**

On June 24<sup>th</sup> our NSS volunteers came together to clean the college garden. With a shared commitment to sustainability and a touch of teamwork, we cleared the entire area to make room for a flourishing vegetables patch.

#### **Event Details:**

- We volunteers reached the campus by 9:30am. We picked up the tools and necessary items and started our work.
- We completed our work within 3 hours we planted some seeds and watered them.

#### **NSS Volunteer Coordination:**

With seamless coordination our NSS volunteers enthusiastically participated in the garden cleanup, demonstrating a collective effort to transform the chaos into a fertile ground ready for planting vegetables

#### **Conclusion:**

As the echoes of teamwork resonated through the college garden, the combined efforts of our NSS volunteers have not only transformed a messy space into a green canvas but have also sown seeds of a vibrant, sustainable future for our campus community.



True Copy Attested



Dr. JOSE P THERATTIL  
Principal  
Jyothi Engineering College  
Cheruthuruthy - 679531

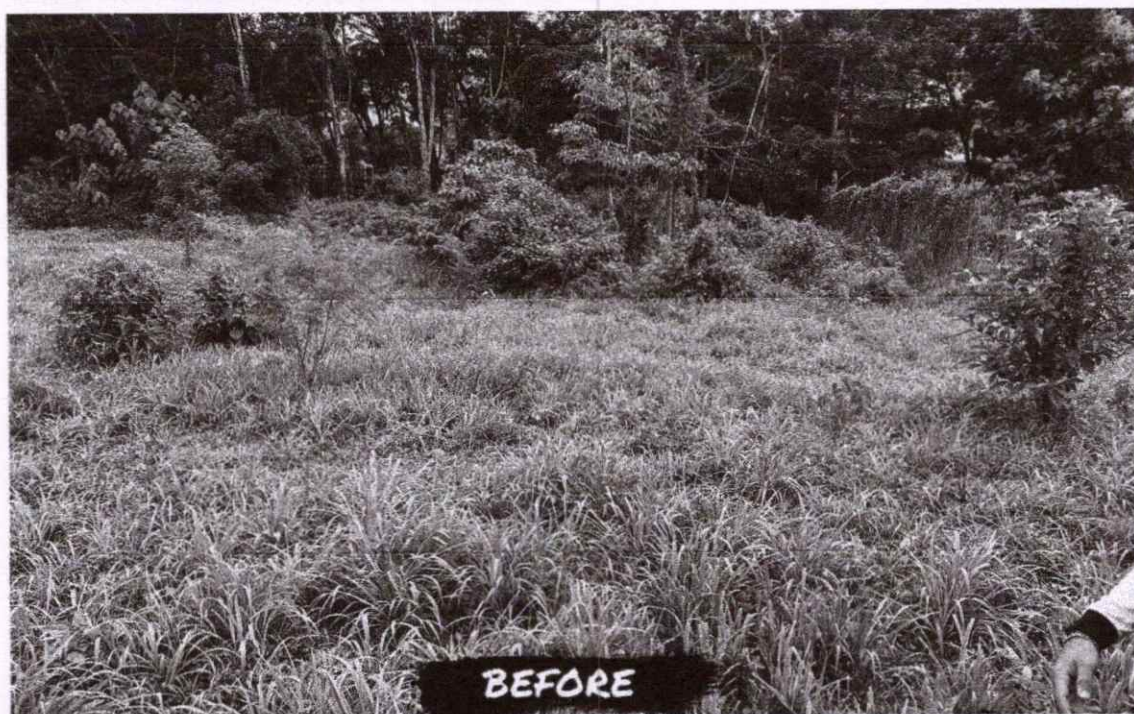




True Copy Attested

*Dr. Jose P Thirattil*  
Dr. JOSE P THIRATTIL  
Principal  
Jyothi Engineering College  
Cheruthuruthy, 679531





**Mr. Sibin Johny**  
NSS Programme Officer

True Copy Attested

*Jose P Therattil*

**Dr. JOSE P THERATTIL**  
Principal  
Jyothi Engineering College  
Cheruthuruthy - 679531



**Dr. Jose P. Therattil**  
Principal



## ANKANAVADI CLEANING

**Date: 30 SEPTEMBER 2023**

**VENUE: MULLURKARA, ANKANAVADI**

### **Introduction:**

The NSS volunteers' visit to Ankanavdi in Mullurakara showcased a commendable initiative to contribute to community well-being. Engaging in a cleanup effort, the volunteers demonstrated a commitment to environmental stewardship and community service. This event not only aimed at fostering cleanliness but also at establishing a meaningful connection with the residents of Ankanavdi. Such endeavours play a crucial role in promoting civic responsibility and building stronger bonds between communities.

### **Event Details:**

- We helped to clear the area which was filled with grasses and plastics.
- As it was a holiday children were not present at the Ankanavadi. But we enjoyed helping them.
- Almost 20 volunteers participated in the cleaning process

### **Conclusion:**

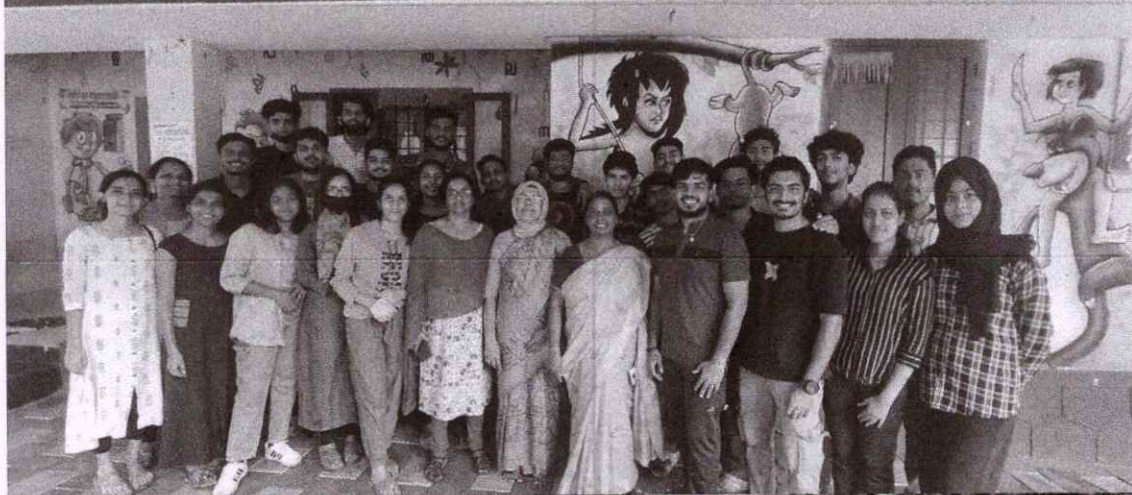
The NSS volunteers' visit to Ankanavdi in Mullurakara, where they actively participated in cleaning the surroundings, exemplified the essence of community service. This initiative showcased a commitment to environmental stewardship and social responsibility. The conclusion of this endeavour likely left a cleaner and more pleasant environment for the residents, emphasizing the impact that collective efforts can have on local communities. The event underscored the significance of hands-on engagement, fostering a sense of accomplishment among the volunteers and reinforcing the values of the NSS in contributing to the well-being of society.

True Copy Attested



  
Dr. JOSE P THERATTIL  
Principal  
Jyothi Engineering College  
Cheruthuruthy - 679531





**Mr. Sibin Johny**  
NSS Programme Officer

True Copy Attested  
*Jose P Therattil*  
Jyothi Engineering College  
JYOTHI ENGINEERING COLLEGE  
LEAD KINDLY LIGHT  
CHERUTHURUTHY, THRISSUR-679531

**Dr. Jose P. Therattil**  
Principal

Dr. JOSE P THERATTIL  
Principal  
Jyothi Engineering College  
Cheruthuruthy - 679531





## GANDHI JAYANTHI

**Date: 2 OCTOBER 2023**

**VENUE: JYOTHI ENGINEERING COLLEGE**

### **Introduction:**

In observance of Gandhi Jayanti, a day dedicated to the legacy of Mahatma Gandhi and his principles of cleanliness and service, NSS volunteers took up the initiative to clean Mullurkara Railway Station. A total of 70 volunteers, along with the guidance of three teachers, actively participated in this community service project. This event not only pays homage to the teachings of Gandhiji but also reflects a tangible commitment from the NSS volunteers to contribute to a cleaner and more sustainable environment in their local community.

### **Event Details:**

- We started off at 9 am.
- 70 volunteers were accompanied for the work along with 3 teachers.
- Neighbours were kind enough to lend us their tools and necessary items for us to clean the area.
- The work lasted till 12:30pm. Refreshments were given among the volunteers.

### **Community Engagement:**

- Following the opening session, the volunteers were actively engaged in their designated cleaning tasks.
- The cooperation and support from the neighbours played a crucial role in the successful and efficient execution of the cleaning efforts.

### **Conclusion:**

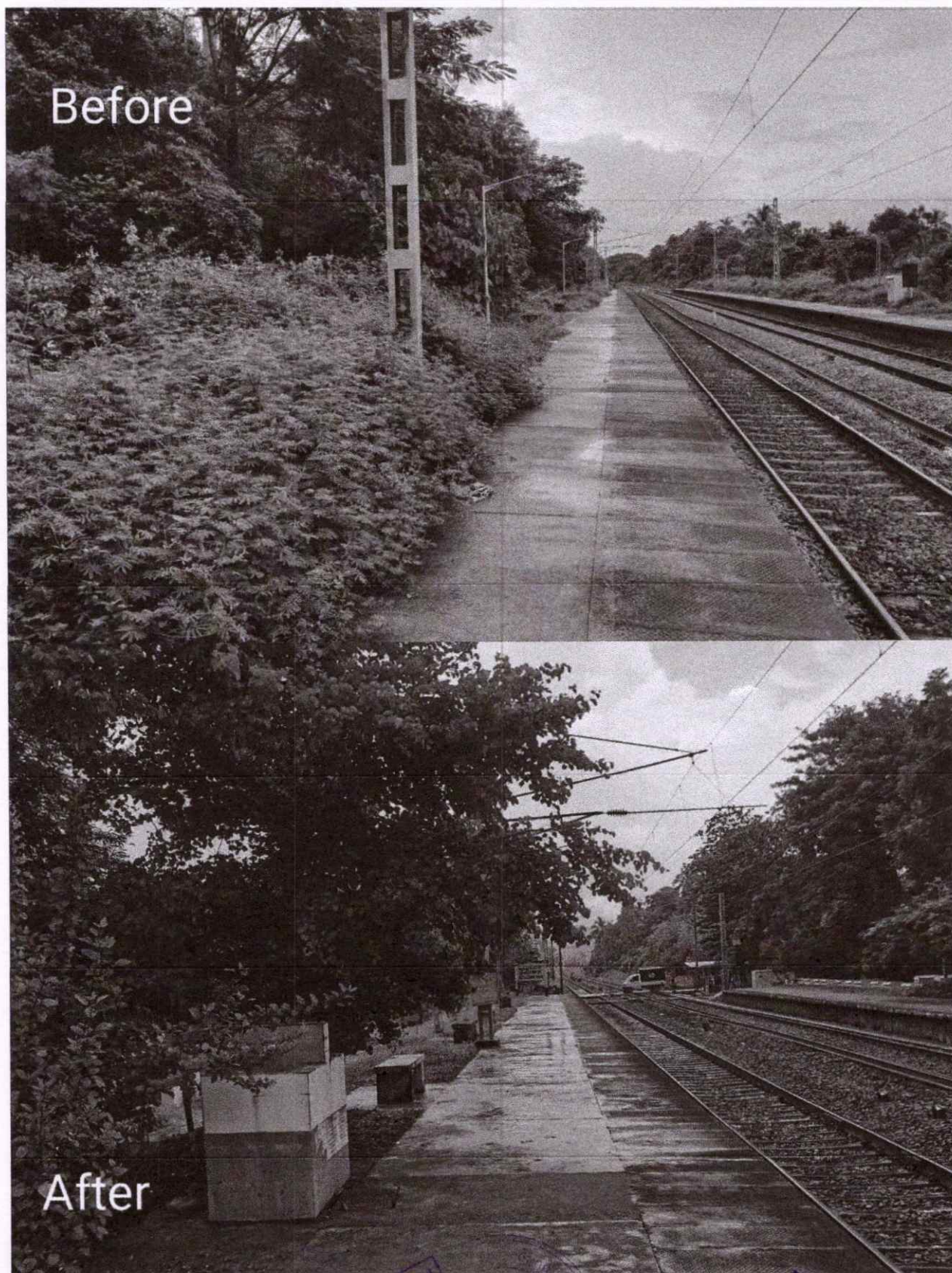
The voluntary cleanup initiative at Mullurkara railway station on Gandhi Jayanti exemplified the spirit of civic responsibility and Gandhian principles. This collective effort not only contributed to the cleanliness of the railway station but also served as a tribute to Mahatma Gandhi's vision of selfless service. The conclusion of this event marked a tangible impact on the local community, fostering a sense of pride among the volunteers for actively participating in the betterment of public spaces and upholding the values of Gandhian ideals.

True Copy Attested



*Jose P*  
Dr. JOSE P THERATTIL  
Principal  
Jyothi Engineering College  
Cheruthuruthy - 679531



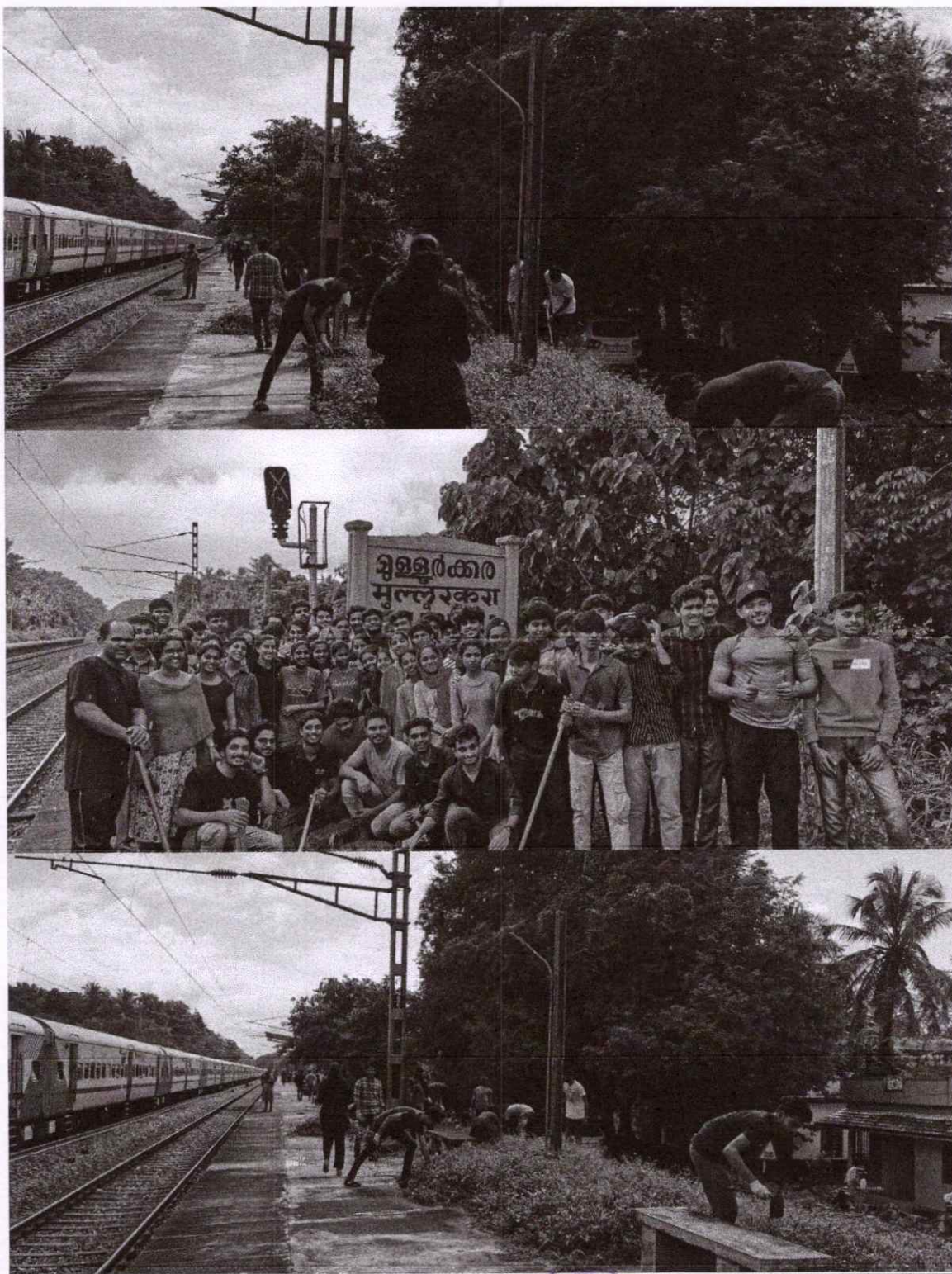


True Copy Attested



*Jose P*  
Dr. JOSE P THERATTIL  
Principal  
Jyothi Engineering College  
Cheruthuruthy - 679531





**Mr. Sibin Johny**  
NSS Programme Officer



**Dr. Jose P. Therattil**  
Principal

**Dr. JOSE P THERATTIL**  
Principal  
Jyothi Engineering College  
Cheruthuruthy - 679531



### MAINTAINING NSS ROOM

**Date:** 4 NOVEMBER 2023

**VENUE:** JYOTHI ENGINEERING COLLEGE

#### Introduction:

The dedicated volunteers of NSS Unit 140 at Jyothi Engineering College united in a collaborative effort to maintain the NSS room. This collective initiative showcases their commitment to fostering a positive and organized environment for the betterment of the college community and the fulfilment of NSS objectives.

#### Event Details:

- The primary focus of this event was to clean and organize the NSS room, ensuring it is well-maintained for future activities and programs.
- At a very short amount of time we were able to clean the entire NSS room.
- During the process, Program Officer Mr. Sibin Sir were present with us.

#### Conclusion:

The collective efforts of NSS Unit 140 volunteers at Jyothi Engineering College in maintaining the NSS room exemplify their dedication to fostering a conducive environment for community service and engagement. This initiative not only enhances the infrastructure but also symbolizes the unity and commitment of the volunteers towards the noble goals of the NSS.

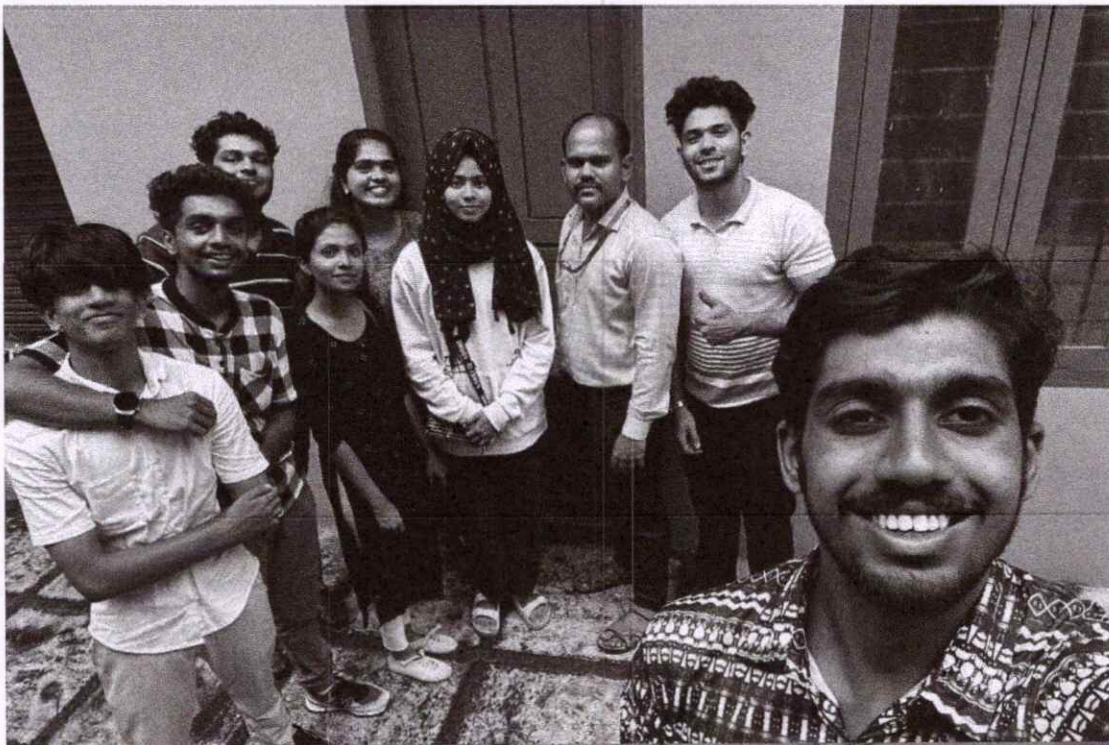


True Copy Attested



Dr. JOSE P THERATTIL  
Principal  
Jyothi Engineering College  
Cheruthuruthy - 679531





**Mr. Sibin Johny**  
NSS Programme Officer



True Copy Attested  
*Jose P. Therattil*  
**Dr. JOSE P. THERATTIL**  
Principal  
Jyothi Engineering College  
Cheruthuruthy - 679531

**Dr. Jose P. Therattil**  
Principal



### NATIONAL ENERGY CONSERVATION DAY

**Date: 14 DECEMBER 2023**

**VENUE: CHERUTHURUTHY SCHOOL**

**Introduction:**

NSS Unit 140 organized an orientation program in observance of National Energy Conservation Day. The session was led by Professor Jenson Jose, Head of the Electrical and Electronics Engineering (EEE) department. The program aimed to raise awareness and promote energy conservation practices among participants.

**Event Details:**

- The program was held at insight hall at 12:30pm.
- Welcoming speech was delivered by the energy cell coordinator Mr. Joseph Martin followed by the presidential address by Program Officer Mr. Sibin Sir.
- The session was led by Asst. Prof. Jenson Jose, Head of Electrical and Electronics Engineering Department.
- A pledge was taken as a part of energy conservation day.

**Conclusion:**

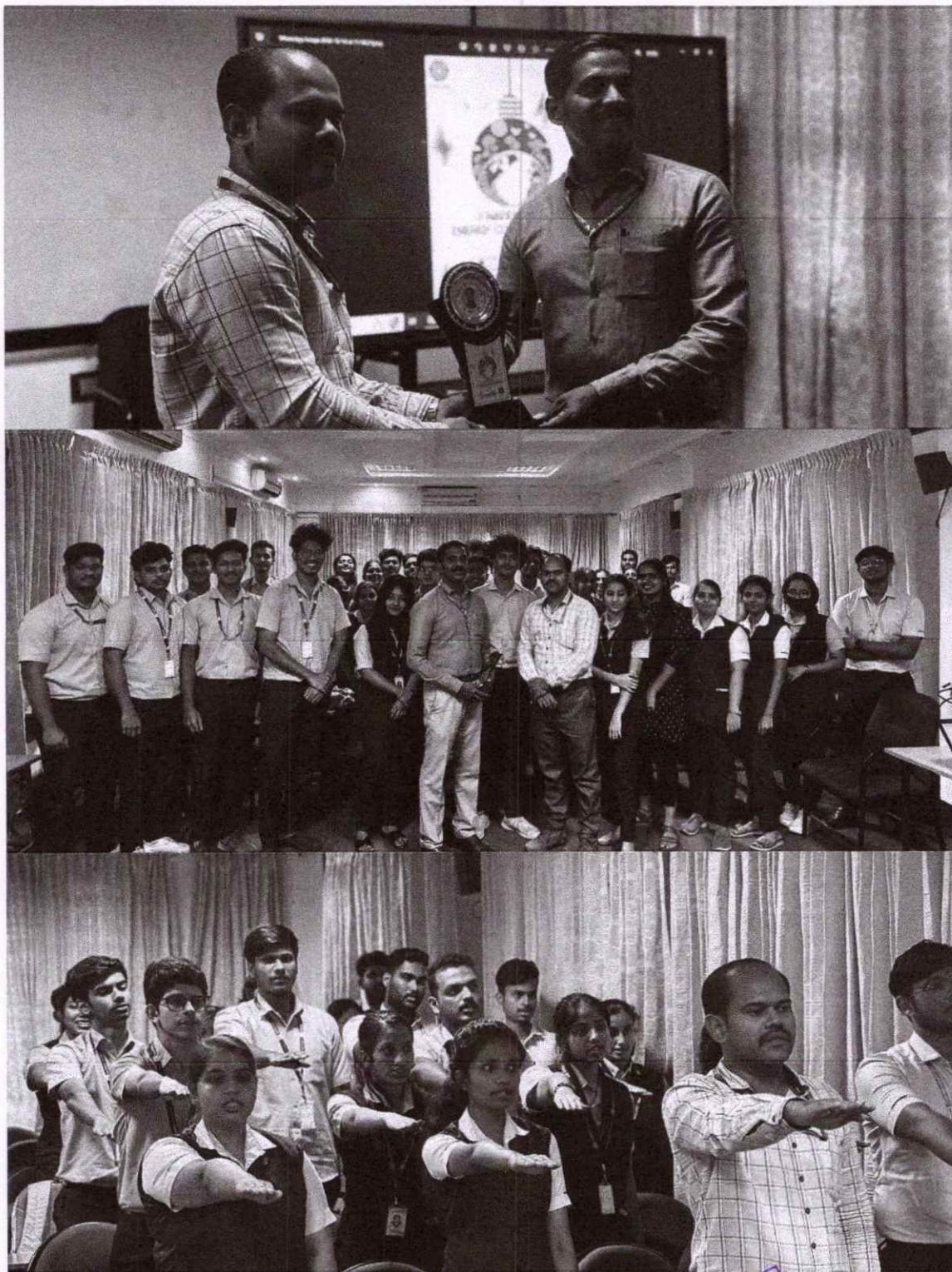
NSS Unit 140's orientation program on National Energy Conservation Day proved to be engaging and impactful session. Despite the participants being immersed in exam preparations, the event witnessed enthusiastic involvement from volunteers. The highlight was the collective pledge taken, symbolizing a commitment to fostering energy conservation. This initiative not only showcased the unit's dedication but also emphasized the importance of environmental responsibility within the academic community.



True Copy Attested

*Jose*  
Dr. JOSE P THERATTIL  
Principal  
Jyothi Engineering College  
Cheruthuruthy - 679531





**Mr. Sibin Johny**  
NSS Programme Officer



True Copy Attested  
*Jose P*  
**Dr. JOSE P THERATTIL**  
Principal  
Jyothi Engineering College  
Cheruthuruthy - 679531

**Dr. Jose P. Therattil**  
Principal



### ANTI DRUG AWARENESS BUS

**Date: 28 FEBRUARY 2023**

**VENUE: JYOTHI ENGINEERING COLLEGE**

#### **Introduction:**

The Kerala Government's Vimukti Mission has embarked on a significant initiative—the "Anti-Drugs Awareness Bus." This mobile campaign carrying a vital message of anti-drug advocacy. Recently, Jyothi Engineering College NSS Unit 140 proudly extended a warm welcome to this endeavour within the college premises. On a vibrant morning at 11:30, the courtyard of the college became the stage for a momentous occasion as the Anti-Drugs Awareness Bus, escorted by the Excise Department, was enthusiastically welcomed by a gathering of NSS volunteers and fellow students.

#### **Event Details:**

- Principal Jose P. Therattil delivered the presidential address
- The event was inaugurated by Mrs. Thankamma, Panjal Panchayath President
- Excise Officer Mr. Rajesh shared some advices with the students

#### **Conclusion:**

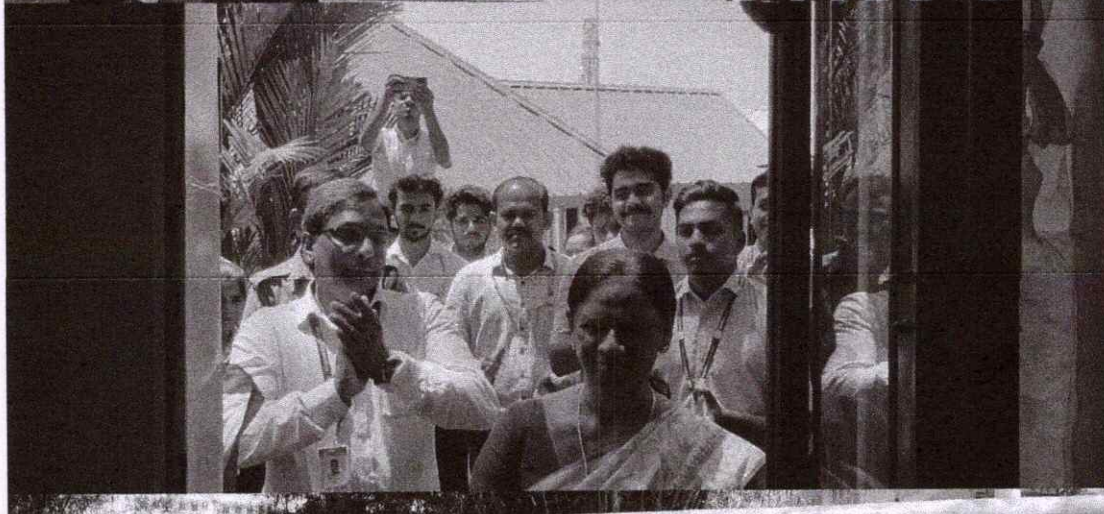
The welcoming of the "Anti-Drugs Awareness Bus" by the NSS Unit 140 and students of Jyothi Engineering College marks a significant step in the collective effort to combat drug abuse as part of Kerala Government's Vimukti Mission activities. By actively engaging in initiatives aimed at raising awareness and promoting a drug-free society, we affirm our dedication to safeguarding the well-being of our community. The event serves as a reminder of the importance of collective action in addressing societal challenges and working towards a healthier, drug-free future for all.



True Copy Attested

  
Dr. JOSE P THERATTIL  
Principal  
Jyothi Engineering College  
Cheruthuruthy - 679531





**Mr. Sibin Johny**  
NSS Programme Officer

**Dr. Jose P. Therattil**  
Principal



*Jose P*  
**Dr. JOSE P THERATTIL**  
Principal  
Jyothi Engineering College  
Cheruthuruthy - 679531

True Certified



### KTU-KCF HOUSING PROJECT: WORK-01

**Date: 11 MAY 2024**

**VENUE: VIRUPPAKKA**

#### **Introduction:**

On the 11th of May, NSS Unit 140 of Jyothi Engineering College took a significant step forward in their commitment to community service by participating in the KCF Housing Project. This initiative is dedicated to constructing a home for a woman facing severe financial hardships. Demonstrating their dedication and compassion, the NSS volunteers arrived at the construction site early in the morning, ready to assist in laying the foundation. Their early start at 7:30 AM set the tone for a productive day, where their collective efforts greatly facilitated the foundational work. This hands-on involvement not only advanced the building process but also underscored the volunteers' spirit of solidarity and service.

#### **Conclusion:**

The participation of volunteers in the KCF Housing Project was a remarkable display of community support and volunteerism. The volunteer's commitment to arriving early and assisting in setting up the foundation significantly eased the construction efforts for the day. This initiative not only provided critical support to a woman in need but also strengthened the community bonds, showcasing the transformative power of collective action.



True Copy Attested

  
Dr. JOSE P THERATTIL  
Principal  
Jyothi Engineering College  
Cheruthuruthy - 679531

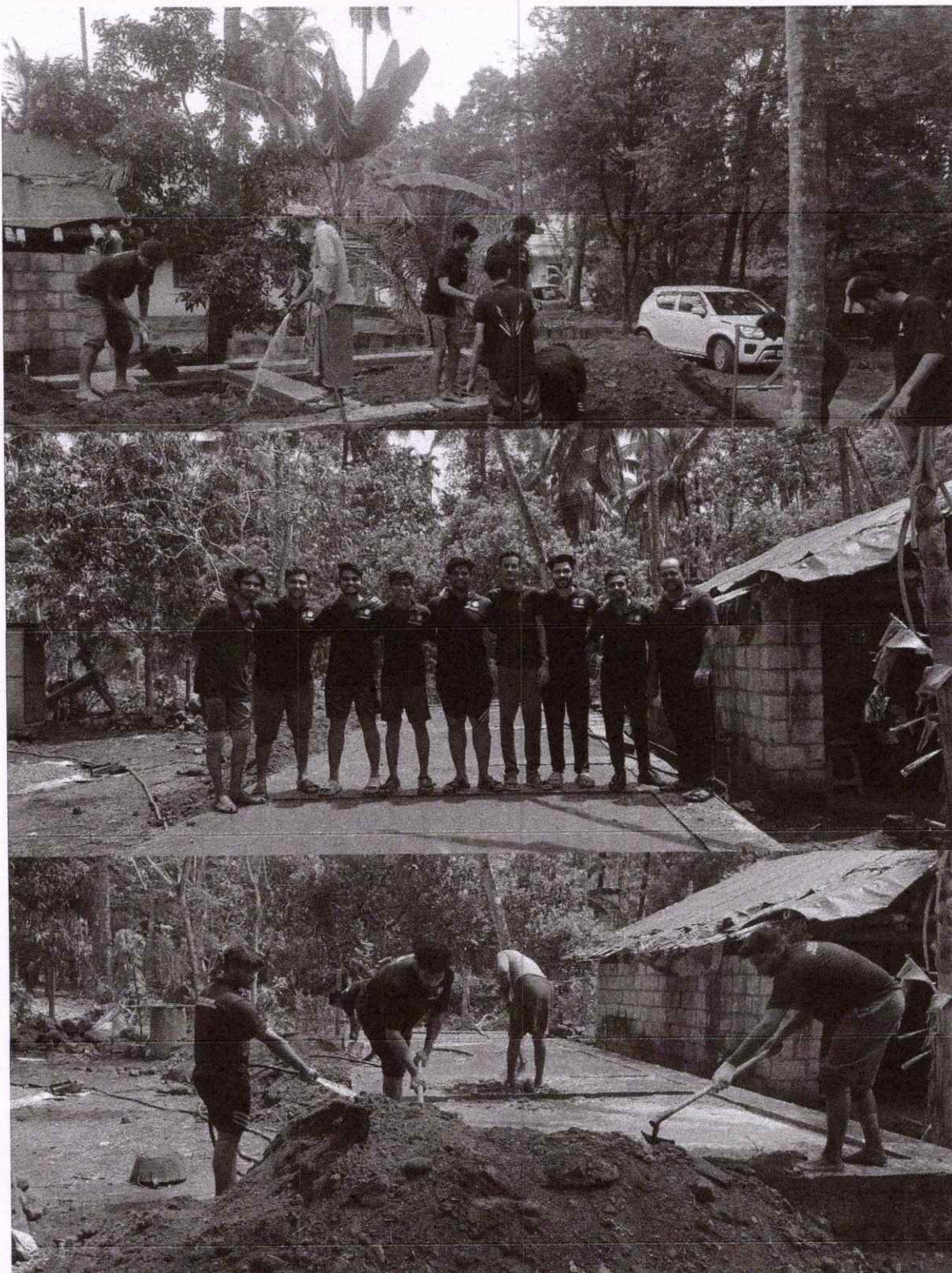




True Copy Attested

*Jose P Therattil*  
Dr. JOSE P THERATTIL  
Principal  
Jyothi Engineering College  
Cheruthuruthy - 679531





**Mr. Sibin Johny**  
NSS Programme Officer



True Copy Attested

**Dr. Jose P. Therattil**  
Principal  
Dr. JOSE P THERATTIL  
Principal  
Jyothi Engineering College  
Cheruthuruthy - 679531



## KTU-KCF HOUSING PROJECT: WORK-02

**Date: 23 JUNE 2024**

**VENUE: KALLAMPARA**

### **Introduction:**

As part of their commitment to the KCF Housing Project, NSS Unit 140 of Jyothi Engineering College has enthusiastically undertaken the task of constructing homes for four deserving individuals. Recently, the volunteers dedicated their time and effort to assist in the construction of the project's third house, which had just commenced.

On the morning of their service day, starting at 8 AM, the volunteers arrived at the construction site ready to contribute. Despite encountering intermittent rain showers throughout the day, their determination remained steadfast. They labored tirelessly until 2 PM, working hand in hand with skilled laborers and other volunteers to ensure progress on the house.

### **Conclusion:**

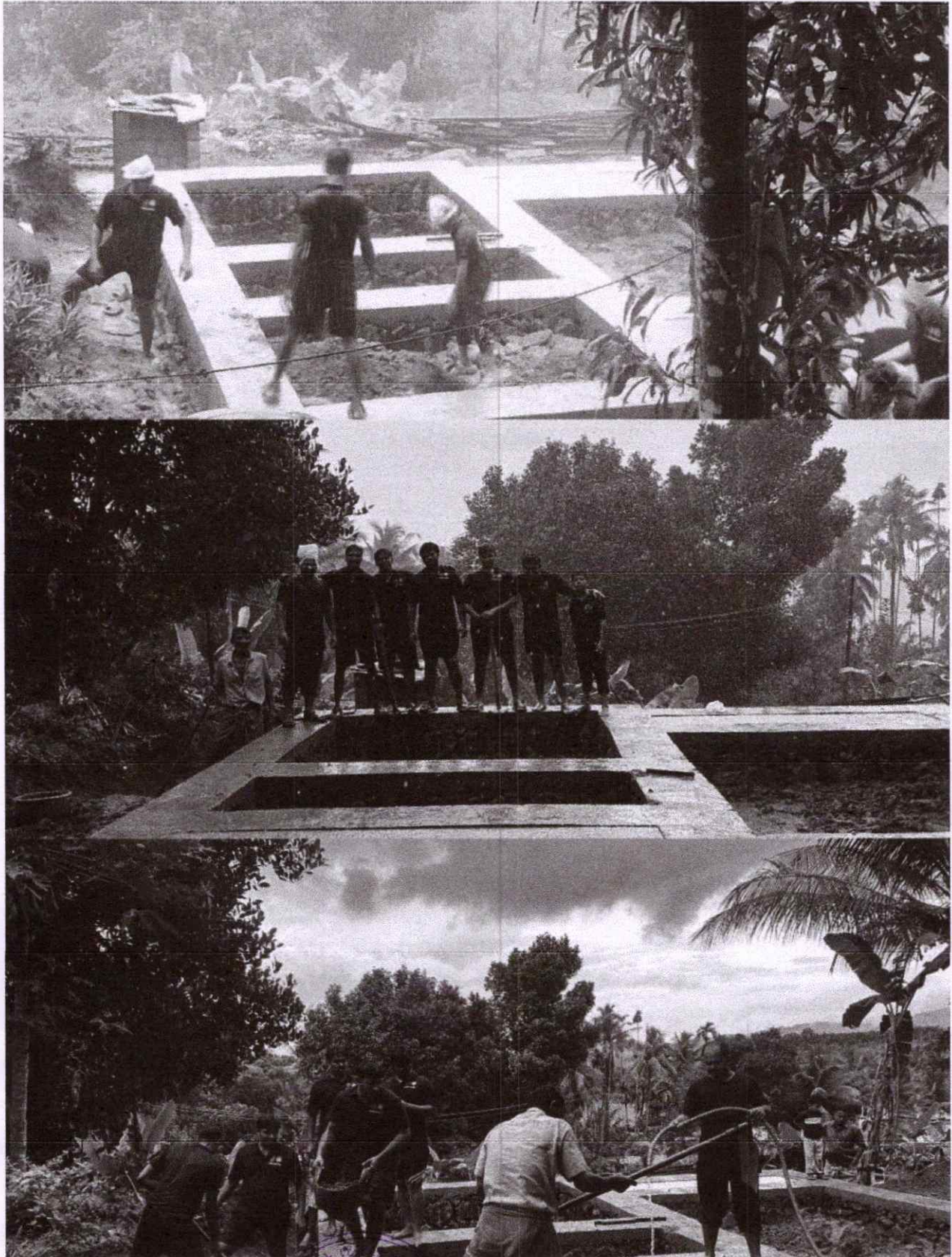
The efforts of NSS Unit 140 from Jyothi Engineering College in the KCF Housing Project shows the power of collective action. By contributing their time and skills to construct homes for four individuals in need, the volunteers have demonstrated unwavering dedication and resilience, even in the face of challenging weather conditions. Their commitment not only advances the project's goals but also embodies the spirit of community service and empathy.



True Copy Attested

  
Dr. JOSE P THERATTIL  
Principal  
Jyothi Engineering College  
Cheruthuruthy - 679531





True Copy Attested

*Jose P*  
Dr. JOSE P THERATTIL  
Principal  
Jyothi Engineering College  
Cheruthuruthy - 679531





**Mr. Sibin Johny**  
NSS Programme Officer



True Copy Attested

**Dr. Jose P. Therattil**  
Principal

*Jose P Therattil*  
**Dr. JOSE P THERATTIL**  
Principal  
Jyothi Engineering College  
Cheruthuruthy - 679531